



REMS-Certified SPRAVATO[®] (esketamine) Treatment Center Communications Toolkit

Janssen Pharmaceuticals, Inc., developed the following materials to help you educate and inform your local community about your treatment center's readiness to offer SPRAVATO[®] (esketamine) CIII Nasal Spray as a treatment option.

Please note: this toolkit and its materials are being provided for your conditional use, subject to agreement with these terms. The information in this toolkit is meant to be educational to help inform your communications. Your use of these materials is not an endorsement by Janssen of your treatment center. In no event is Janssen responsible for your use of this material. Modifications are prohibited and Janssen has no liability for any modifications made. Your use of this material does not provide you with any right or license to any of Janssen's intellectual property, including, without limitation, any Janssen logos, trademarks or images. Janssen reserves all rights under law with respect to its intellectual property. SPRAVATO[®] is a registered trademark of Johnson & Johnson and its affiliated companies.

Please see [Indications and Important Safety Information](#) on pages 12-16 and full [Prescribing Information](#), including Boxed Warnings, and [Medication Guide](#) for SPRAVATO[®]

TABLE OF CONTENTS

COMMUNICATING ABOUT SPRAVATO® (ESKETAMINE) CIII NASAL SPRAY	3
BACKGROUND INFORMATION ABOUT SPRAVATO®	4
Limitations of Use	4
SPRAVATO® (esketamine) CIII Nasal Spray	4
About the SPRAVATO® Risk Evaluation & Mitigation Strategy (REMS).....	4
CLINICAL RESOURCES	5
SPRAVATO® (ESKETAMINE) CIII NASAL SPRAY CONVERSATION GUIDE	5
SPRAVATO® PRODUCT IMAGE	5
SPRAVATO® LOGO	5
UPDATE PRACTICE INFORMATION FOR FIND-A-CENTER TOOL	5
PATIENT REFERRAL FOR SPRAVATO® TREATMENT FORM	6
TC PATIENT TREATMENT PROGRESS FORM	6
SPRAVATO® PROFESSIONAL IMPORTANT SAFETY INFORMATION (ISI)	6
SPRAVATO® CONSUMER/PATIENT IMPORTANT SAFETY INFORMATION (ISI)	6
SPRAVATO® PRESCRIBING INFORMATION (PI)	7
SPRAVATO® MEDICATION GUIDE	7
PATIENT EDUCATIONAL RESOURCES	8
SPRAVATO® PATIENT STARTER GUIDES	8
NEW: SPRAVATO® ASK THE EXPERTS VIDEO	9
SPRAVATO® PATIENT VIDEO: NICOLE’S STORY	9
SPRAVATO® PATIENT VIDEO: ALLISON’S STORY	10
SPRAVATO® PATIENT VIDEO: WHAT TO EXPECT DURING YOUR SPRAVATO® TREATMENT	10
COMMUNICATIONS TEMPLATE FOR HEALTHCARE PROFESSIONALS	11
HEALTHCARE PROFESSIONAL INDICATIONS AND IMPORTANT SAFETY INFORMATION	12
COMMUNICATIONS TEMPLATE FOR PATIENTS	17
CONSUMER INDICATIONS AND IMPORTANT SAFETY INFORMATION	19
SPRAVATO® PRESCRIBING INFORMATION	24
SPRAVATO® MEDICATION GUIDE	36

Please see [Indications and Important Safety Information](#) on pages 12-16 and full [Prescribing Information](#), including Boxed Warnings, and [Medication Guide](#) for SPRAVATO®.

COMMUNICATING ABOUT SPRAVATO® (ESKETAMINE) CIII NASAL SPRAY

In this toolkit, you can find background information about SPRAVATO® to help educate and inform your practice's communications. When communicating about SPRAVATO®, it is important to always include the Healthcare Professional version of the Indications and Important Safety Information (ISI) for internal communications, and the Consumer Indications and ISI for external communications. If you have any questions about the SPRAVATO® REMS, please call 1-855-382-6022.

Your use of SPRAVATO® product imagery and Janssen logos is being conditionally allowed when communicating about SPRAVATO®. Using these images does not provide you with any right or license to any of Janssen's intellectual property, including, without limitation, any Janssen logos, trademarks or images.

BACKGROUND INFORMATION ABOUT SPRAVATO®

Please see below for information about SPRAVATO®. This information is purely for educational purposes, and Janssen has no liability for your use of this information, including any modifications made should you choose to use this information when communicating about SPRAVATO®. In no event is Janssen responsible for your use of this material.

About SPRAVATO®

SPRAVATO® (esketamine) CIII nasal spray is a nonselective, noncompetitive antagonist of the N-methyl-D-aspartate (NMDA) receptor – an ionotropic glutamate receptor. It is a first-of-its kind medicine approved by the FDA in two major depressive disorder (MDD) subpopulations with high unmet need.¹

SPRAVATO® is approved in the United States, in conjunction with an oral antidepressant, to treat adults with treatment-resistant depression (TRD) and to treat depressive symptoms in adults with MDD with acute suicidal ideation or behavior.

Limitations of Use

- The effectiveness of SPRAVATO® in preventing suicide or in reducing suicidal ideation or behavior has not been demonstrated. Use of SPRAVATO® does not preclude the need for hospitalization if clinically warranted, even if patients experience improvement after an initial dose of SPRAVATO®.
- SPRAVATO® is not approved as an anesthetic agent. The safety and effectiveness of SPRAVATO® as an anesthetic agent have not been established.

SPRAVATO® (esketamine) CIII Nasal Spray

While SPRAVATO® and ketamine are chemically related, SPRAVATO® is not the same as IV ketamine. Only SPRAVATO® has undergone extensive controlled clinical trials that informed the FDA approval of the medicine for use in adults with TRD and to treat depressive symptoms in adults with MDD with acute suicidal ideation or behavior.

About the SPRAVATO® Risk Evaluation & Mitigation Strategy (REMS)

SPRAVATO® is available only through a restricted distribution program called the SPRAVATO® REMS. A REMS program is in place to ensure the safety of all patients who are treated with SPRAVATO®. The goals of the REMS are to mitigate the risks of serious adverse outcomes resulting from sedation and dissociation caused by SPRAVATO® administration, and abuse and misuse of SPRAVATO®, by

- Ensuring SPRAVATO® is only dispensed and administered to patients in medically supervised healthcare settings that monitor these patients
- Ensuring pharmacies and healthcare settings that dispense SPRAVATO® are REMS certified
- Ensuring patients are informed about serious adverse outcomes from dissociation and sedation and the need for monitoring
- Enrolling all patients who receive treatment in an outpatient healthcare setting in a REMS registry to further characterize the risks and support safe use

Patients' first visit may be a consultation to discuss the details with a healthcare provider at the certified SPRAVATO® treatment center to determine if SPRAVATO® is considered an appropriate treatment option. If SPRAVATO® is recommended, the healthcare provider will discuss important safety risks and enroll patients in the SPRAVATO® REMS Program prior to treatment initiation.

Please see [Indications and Important Safety Information](#) on pages 12-16 and full [Prescribing Information](#), including [Boxed Warnings](#), and [Medication Guide](#) for SPRAVATO®.

Reference: Duman RS. *F1000Research*. 2018;7:F1000.

CLINICAL RESOURCES

These materials can be provided to the clinicians in your treatment center while discussing SPRAVATO® with their patients. Download these resources to learn more about the clinical information regarding SPRAVATO®.

SPRAVATO® (ESKETAMINE) CIII NASAL SPRAY CONVERSATION GUIDE



The [SPRAVATO® Conversation Guide](#) provides an overview of clinical trials, treatment process, and the REMS program

SPRAVATO® PRODUCT IMAGE



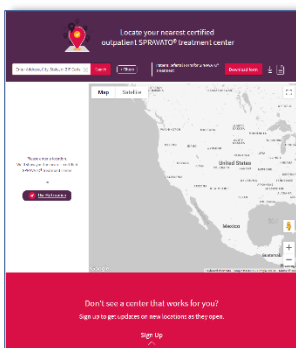
The [SPRAVATO® product image](#) is a high-resolution file that can be used in printed material and web-based content.

SPRAVATO® LOGO



The [SPRAVATO® logo](#) is a high-resolution file that can be used in printed material and web-based content.

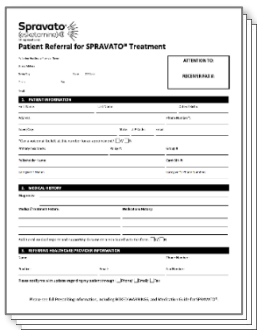
UPDATE PRACTICE INFORMATION FOR FIND-A-CENTER TOOL



The [Find-a-Center tool](#) allows referring providers and patients to locate REMS-certified SPRAVATO® treatment centers who are actively treating patients within the last 6 months. This tool can be used at any time to ensure that your practice information is up to date.

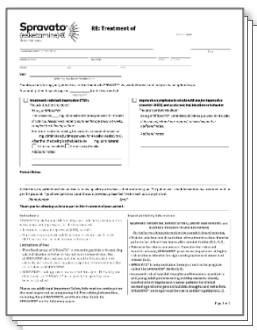
If your practice details need to be added or modified in the Find-a-Center tool, contact the SPRAVATO® REMS Coordinating Center at 1-855-382-6022, Monday to Friday, 8 AM to 8 PM ET.

PATIENT REFERRAL FOR SPRAVATO® TREATMENT FORM



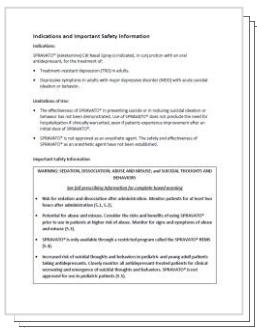
The [SPRAVATO® Patient Referral form](#) can be customized with your practice details and may be sent to healthcare providers (HCPs) to complete when referring appropriate patients to your practice. This document also provides referring HCPs with helpful steps to consider when working with your treatment center. It is important to follow up with referring HCPs to ensure they have received this form.

TC PATIENT TREATMENT PROGRESS FORM



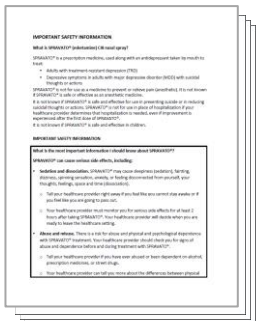
The [SPRAVATO® TC Treatment Progress form](#) may be sent to referring HCPs in order to update them on their patient's treatment progress. It is important to follow up with referring HCPs to ensure they have received this form.

SPRAVATO® PROFESSIONAL IMPORTANT SAFETY INFORMATION (ISI)



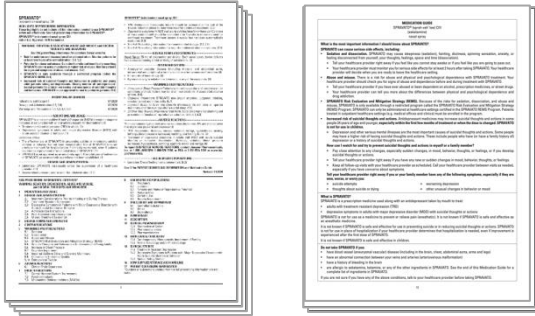
When communicating about SPRAVATO®, it is important to always include the [Healthcare Professional Version](#) of the Indications and Important Safety Information (ISI) for internal communications.

SPRAVATO® CONSUMER/PATIENT IMPORTANT SAFETY INFORMATION (ISI)



When communicating externally to patients about SPRAVATO®, it is important to always include the text of the [Consumer Version](#) of the Indications and Important Safety Information (ISI).

SPRAVATO® PRESCRIBING INFORMATION (PI) AND MEDICATION GUIDE



When communicating internally to HCPs or externally to patients, the full [SPRAVATO® Prescribing Information](#) and [SPRAVATO® Medication Guide](#) should always be available for reference.

PATIENT EDUCATIONAL RESOURCES

Download these resources to learn more and educate your patients about SPRAVATO®.

Please note: These materials are being provided for your conditional use, subject to agreement with these terms. Your use of these materials is not an endorsement by Janssen of your treatment center. In no event is Janssen responsible for your use of this material. Modifications are prohibited and Janssen has no liability for any modifications made. Your use of this material does not provide you with any right or license to any of Janssen's intellectual property, including, without limitation, any Janssen logos, trademarks or images. Janssen reserves all rights under law with respect to its intellectual property.

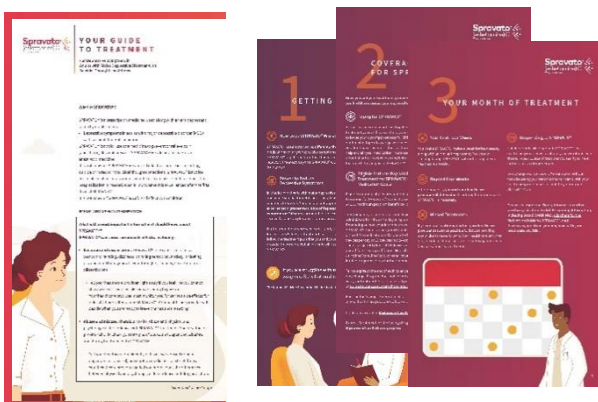
There are 2 different types of patient resources included below:

1. Patient guides are multipage materials for patients that provide an overview of treatment and what to expect
2. Patient videos are available and can be embedded on the treatment center website to provide a valuable resource to patients and their families
 - Please note that if you are sharing videos on your website, the included embed codes should be used to ensure appropriate formatting.
 - When sharing these videos with patients, you must include a link to the full [Prescribing Information](#) and [Medication Guide](#) in close proximity.

SPRAVATO® PATIENT STARTER GUIDES

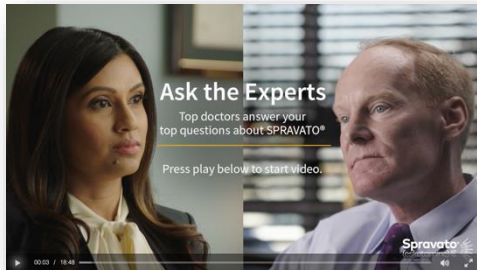


The [SPRAVATO® TRD Patient Starter Guide](#) is a comprehensive patient-focused resource to help prepare patients for what to expect before, during, and after treatment with SPRAVATO®. Patients can also find additional information on the clinical evidence, treatment process and REMS program.



The [SPRAVATO® MDSI Patient Starter Guide](#) is a comprehensive patient-focused resource to help prepare patients for what to expect before, during and after treatment with SPRAVATO®. Patients can also find additional information on the clinical evidence, treatment process, and REMS program.

NEW: SPRAVATO® ASK THE EXPERTS VIDEO



Doctors answer patients' top 9 questions about SPRAVATO®. Be sure to watch the entire video to get the full SPRAVATO® story, including safety information.

Direct link: <https://spravato.brightcovegallery.com/ask-the-expert>

Embed Code:

- Standard code: `<div style="position: relative; display: block; max-width: 300px;"><div style="padding-top: 56.25%;"><iframe src=https://players.brightcove.net/4317630935001/default_default/index.html?videoId=6318463461112 allowfullscreen="" allow="encrypted-media" style="position: absolute; top: 0px; right: 0px; bottom: 0px; left: 0px; width: 100%; height: 100%;"></iframe></div></div>`
- Advanced code: `<div style="max-width: 300px;"><style>video-js.video-js.vjs-fluid:not(.vjs-audio-only-mode) {padding-top: 56.25%;}</style><video-js data-account="4317630935001" data-player="default" data-embed="default" controls="" data-video-id="6318463461112" data-playlist-id="" data-application-id="" class="vjs-fluid"></video-js></div><script src=https://players.brightcove.net/4317630935001/default_default/index.min.js></script>`

[Prescribing Information](#) [Medication Guide](#)

SPRAVATO® PATIENT VIDEO: NICOLE'S STORY



SPRAVATO® helped Nicole's treatment-resistant depression. Now, she's resuming her education and sharing her story.

Direct link: <https://spravato.brightcovegallery.com/nicole-story>

Embed Code:

- Standard code: `<div style="position: relative; display: block; max-width: 300px;"><div style="padding-top: 56.25%;"><iframe src="https://players.brightcove.net/4317630935001/default_default/index.html?videoId=6192118707001" allowfullscreen="" allow="encrypted-media" style="position: absolute; top: 0px; right: 0px; bottom: 0px; left: 0px; width: 100%; height: 100%;"></iframe></div></div>`
- Advanced code: `<div style="max-width: 300px;"><video-js data-account="4317630935001" data-player="default" data-embed="default" controls="" data-video-id="6192118707001" data-playlist-id="" data-application-id="" class="vjs-fluid"></video-js></div><script src="https://players.brightcove.net/4317630935001/default_default/index.min.js"></script>`

[Prescribing Information](#) [Medication Guide](#)

SPRAVATO® PATIENT VIDEO: ALLISON'S STORY



Allison's son tried many oral antidepressants without relief. Now, because of SPRAVATO®, Allison's son is starting to feel like himself again.

Direct link: <https://spravato.brightcovegallery.com/allison-social-sharing>

Embed Code:

- Standard Code: `<div style="position: relative; display: block; max-width: 300px;"><div style="padding-top: 56.25%;"><iframe src="https://players.brightcove.net/4317630935001/default_default/index.html?videoId=6275999144001" allowfullscreen="" allow="encrypted-media" style="position: absolute; top: 0px; right: 0px; bottom: 0px; left: 0px; width: 100%; height: 100%;"></iframe></div></div>`
- Advanced Code: `<div style="max-width: 300px;"><video-js data-account="4317630935001" data-player="default" data-embed="default" controls="" data-video-id="6275999144001" data-playlist-id="" data-application-id="" class="vjs-fluid"></video-js></div><script src="https://players.brightcove.net/4317630935001/default_default/index.min.js"></script>`

[Prescribing Information](#) [Medication Guide](#)

SPRAVATO® PATIENT VIDEO: WHAT TO EXPECT DURING YOUR SPRAVATO® TREATMENT



A patient-friendly video overview of the SPRAVATO® treatment process.

Direct link: <https://spravato.brightcovegallery.com/spravato-patient-video>

Embed Code:

- Standard Code: `<div style="position: relative; display: block; max-width: 300px;"><div style="padding-top: 56.25%;"><iframe src="https://players.brightcove.net/4317630935001/default_default/index.html?videoId=6196463203001" allowfullscreen="" allow="encrypted-media" style="position: absolute; top: 0px; right: 0px; bottom: 0px; left: 0px; width: 100%; height: 100%;"></iframe></div></div>`
- Advanced Code: `<div style="max-width: 300px;"><video-js data-account="4317630935001" data-player="default" data-embed="default" controls="" data-video-id="6196463203001" data-playlist-id="" data-application-id="" class="vjs-fluid"></video-js></div><script src="https://players.brightcove.net/4317630935001/default_default/index.min.js"></script>`

[Prescribing Information](#) [Medication Guide](#)

COMMUNICATIONS TEMPLATE FOR HEALTHCARE PROFESSIONALS

At the discretion of your communications leader, the below communication may be tailored based on your specific needs and shared with healthcare professionals. Please use the [Healthcare Professional Version](#) of the Indications and Important Safety Information (ISI).

SUBJECT LINE/TITLE: [Treatment Center] Now REMS Certified and Ready to Provide a Treatment Option in Two Subpopulations of Adults With Major Depressive Disorder (MDD)

We are now Risk Evaluation and Mitigation Strategy (REMS)–certified to provide SPRAVATO® (esketamine) CIII, a nasal spray approved for use, in conjunction with an oral antidepressant, to treat treatment-resistant depression (TRD) in adults and depressive symptoms in adults with MDD with acute suicidal ideation or behavior. The effectiveness of SPRAVATO® in preventing suicide or in reducing suicidal ideation or behavior has not been demonstrated. Use of SPRAVATO® does not preclude the need for hospitalization if clinically warranted, even if patients experience improvement after an initial dose of SPRAVATO®. SPRAVATO® is not approved as an anesthetic agent. The safety and effectiveness of SPRAVATO® as an anesthetic agent have not been established.

Because of the risks for sedation, dissociation, abuse and misuse, and suicidal thoughts and behaviors, SPRAVATO® carries a Boxed WARNING and is available only through a restricted program called the SPRAVATO® Risk Evaluation and Mitigation Strategy (REMS) Program. SPRAVATO® can be administered only at healthcare settings certified in the SPRAVATO® REMS Program and to patients enrolled in the program. SPRAVATO® is never dispensed directly to a patient for home use.

The medical staff at our certified treatment center are trained to prescribe, dispense, and administer SPRAVATO®, and we have established processes and procedures in accordance with the REMS. A healthcare provider will provide direct medical supervision as the patient self-administers SPRAVATO® and will monitor every patient after every dose for at least two hours for resolution of sedation and dissociation and changes in vital signs.

SPRAVATO® must never be dispensed directly to a patient for home use. Additionally, all patients require transportation from [Treatment Center] following the observation period, as they should not drive or operate machinery until the day after a treatment session, following a restful sleep.

At [Treatment Center], we understand that finding an appropriate treatment option for these patients can be complex. We are committed to partnering with your practice to provide a well-coordinated treatment experience with SPRAVATO® for appropriate adult patients. Our healthcare providers are proactive about coordinating care and will ensure an open line of communication with referring providers about the patient's progress through the [Patient Treatment Progress Form](#). In addition, our care team will help provide patients with a clear understanding of what to expect with SPRAVATO® treatment sessions. Our treatment center will carry out benefits investigation to ensure that you and your patients are aware of coverage and costs prior to SPRAVATO® treatment.

To learn more about our treatment center and how we can work together to provide appropriate adult patients with SPRAVATO®, please contact [designated treatment center contact]. To help provide your patients with SPRAVATO®, complete and return the patient intake form attached to this email to ensure patient care coordination. [\[Ensure Patient Referral Form is attached to this email\]](#)

For more information about SPRAVATO®, please refer to the manufacturer's [Prescribing Information](#) and [Medication Guide](#) or visit www.spravatohcp.com.

SPRAVATO® is a registered trademark of Johnson & Johnson and its affiliated companies.

HEALTHCARE PROFESSIONAL INDICATIONS AND IMPORTANT SAFETY INFORMATION

Indications

SPRAVATO® (esketamine) CIII Nasal Spray is indicated, in conjunction with an oral antidepressant, for the treatment of:

- Treatment-resistant depression (TRD) in adults.
- Depressive symptoms in adults with major depressive disorder (MDD) with acute suicidal ideation or behavior.

Limitations of Use:

- The effectiveness of SPRAVATO® in preventing suicide or in reducing suicidal ideation or behavior has not been demonstrated. Use of SPRAVATO® does not preclude the need for hospitalization if clinically warranted, even if patients experience improvement after an initial dose of SPRAVATO®.
- SPRAVATO® is not approved as an anesthetic agent. The safety and effectiveness of SPRAVATO® as an anesthetic agent have not been established.

Important Safety Information

WARNING: SEDATION, DISSOCIATION; ABUSE AND MISUSE; and SUICIDAL THOUGHTS AND BEHAVIORS

See full prescribing information for complete boxed warning

- **Risk for sedation and dissociation after administration. Monitor patients for at least two hours after administration (5.1, 5.2).**
- **Potential for abuse and misuse. Consider the risks and benefits of using SPRAVATO® prior to use in patients at higher risk of abuse. Monitor for signs and symptoms of abuse and misuse (5.3).**
- **SPRAVATO® is only available through a restricted program called the SPRAVATO® REMS (5.4).**
- **Increased risk of suicidal thoughts and behaviors in pediatric and young adult patients taking antidepressants. Closely monitor all antidepressant-treated patients for clinical worsening and emergence of suicidal thoughts and behaviors. SPRAVATO® is not approved for use in pediatric patients (5.5).**

CONTRAINDICATIONS

SPRAVATO® is contraindicated in patients with:

- Aneurysmal vascular disease (including thoracic and abdominal aorta, intracranial and peripheral arterial vessels) or arteriovenous malformation.
- History of intracerebral hemorrhage.
- Hypersensitivity to esketamine, ketamine, or any of the excipients.

WARNINGS AND PRECAUTIONS

Sedation: In clinical trials, 48% to 61% of SPRAVATO®-treated patients developed sedation and 0.3% to 0.4% of SPRAVATO®-treated patients experienced loss of consciousness.

Because of the possibility of delayed or prolonged sedation, patients must be monitored by a healthcare provider for at least 2 hours at each treatment session, followed by an assessment to determine when the patient is

considered clinically stable and ready to leave the healthcare setting.

Closely monitor for sedation with concomitant use of SPRAVATO® with CNS depressants (e.g., benzodiazepines, opioids, alcohol).

Dissociation: The most common psychological effects of SPRAVATO® were dissociative or perceptual changes (including distortion of time, space and illusions), derealization and depersonalization (61% to 84% of SPRAVATO®-treated patients developed dissociative or perceptual changes). Given its potential to induce dissociative effects, carefully assess patients with psychosis before administering SPRAVATO®; treatment should be initiated only if the benefit outweighs the risk.

Because of the risks of dissociation, patients must be monitored by a healthcare provider for at least 2 hours at each treatment session, followed by an assessment to determine when the patient is considered clinically stable and ready to leave the healthcare setting.

Abuse and Misuse: SPRAVATO® contains esketamine, a Schedule III controlled substance (CIII), and may be subject to abuse and diversion. Assess each patient's risk for abuse or misuse prior to prescribing and monitor all patients for the development of these behaviors or conditions, including drug-seeking behavior, while on therapy. Individuals with a history of drug abuse or dependence are at greater risk; therefore, use careful consideration prior to treatment of individuals with a history of substance use disorder and monitor for signs of abuse or dependence.

SPRAVATO® Risk Evaluation and Mitigation Strategy (REMS): SPRAVATO® is available only through a restricted program called the SPRAVATO® REMS because of the risks of serious adverse outcomes from sedation, dissociation, and abuse and misuse.

Important requirements of the SPRAVATO® REMS include the following:

- Healthcare settings must be certified in the program and ensure that SPRAVATO® is:
 - Only dispensed and administered in healthcare settings.
 - Patients treated in outpatient settings (e.g., medical offices and clinics) must be enrolled in the program.
 - Administered by patients under the direct observation of a healthcare provider and that patients are monitored by a healthcare provider for at least 2 hours after administration of SPRAVATO®
- Pharmacies must be certified in the REMS and must only dispense SPRAVATO® to healthcare settings that are certified in the program.

Further information, including a list of certified pharmacies, is available at www.SPRAVATOrem.com or 1-855-382-6022.

Suicidal Thoughts and Behaviors in Adolescents and Young Adults: In pooled analyses of placebo-controlled trials of antidepressant drugs (SSRIs and other antidepressant classes) that included adult and pediatric patients, the incidence of suicidal thoughts and behaviors in patients age 24 years and younger was greater than in placebo-treated patients. SPRAVATO® is not approved in pediatric (<18 years of age) patients.

There was considerable variation in risk of suicidal thoughts and behaviors among drugs, but there was an increased risk identified in young patients for most drugs studied.

Monitor all antidepressant-treated patients for clinical worsening and emergence of suicidal thoughts and behaviors, especially during the initial few months of drug therapy and at times of dosage changes. Counsel family members or caregivers of patients to monitor for changes in behavior and to alert the healthcare provider. Consider changing the therapeutic regimen, including possibly discontinuing SPRAVATO® and/or the concomitant oral antidepressant, in

patients whose depression is persistently worse, or who are experiencing emergent suicidal thoughts or behaviors.

Increase in Blood Pressure: SPRAVATO® causes increases in systolic and/or diastolic blood pressure (BP) at all recommended doses. Increases in BP peak approximately 40 minutes after SPRAVATO® administration and last approximately 4 hours.

Approximately 8% to 19% of SPRAVATO®-treated patients experienced an increase of more than 40 mmHg in systolic BP and/or 25 mmHg in diastolic BP in the first 1.5 hours after administration at least once during the first 4 weeks of treatment. A substantial increase in blood pressure could occur after any dose administered even if smaller blood pressure effects were observed with previous administrations. SPRAVATO® is contraindicated in patients for whom an increase in BP or intracranial pressure poses a serious risk (e.g., aneurysmal vascular disease, arteriovenous malformation, history of intracerebral hemorrhage). Before prescribing SPRAVATO®, patients with other cardiovascular and cerebrovascular conditions should be carefully assessed to determine whether the potential benefits of SPRAVATO® outweigh its risk.

Assess BP prior to administration of SPRAVATO®. In patients whose BP is elevated prior to SPRAVATO® administration (as a general guide: >140/90 mmHg), a decision to delay SPRAVATO® therapy should take into account the balance of benefit and risk in individual patients.

BP should be monitored for at least 2 hours after SPRAVATO® administration. Measure blood pressure around 40 minutes post-dose and subsequently as clinically warranted until values decline. If BP remains high, promptly seek assistance from practitioners experienced in BP management. Refer patients experiencing symptoms of a hypertensive crisis (e.g., chest pain, shortness of breath) or hypertensive encephalopathy (e.g., sudden severe headache, visual disturbances, seizures, diminished consciousness, or focal neurological deficits) immediately for emergency care.

Closely monitor blood pressure with concomitant use of SPRAVATO® with psychostimulants (e.g., amphetamines, methylphenidate, modafinil, armodafinil) or monoamine oxidase inhibitors (MAOIs).

In patients with a history of hypertensive encephalopathy, more intensive monitoring, including more frequent blood pressure and symptom assessment, is warranted because these patients are at increased risk for developing encephalopathy with even small increases in blood pressure.

Cognitive Impairment

Short-Term Cognitive Impairment: In a study in healthy volunteers, a single dose of SPRAVATO® caused cognitive performance decline 40 minutes post-dose. Compared to placebo-treated subjects, SPRAVATO®-treated subjects required a greater effort to complete the cognitive tests at 40 minutes post-dose. Cognitive performance and mental effort were comparable between SPRAVATO® and placebo at 2 hours post-dose. Sleepiness was comparable after 4 hours post-dose.

Long-Term Cognitive Impairment: Long-term cognitive and memory impairment have been reported with repeated ketamine misuse or abuse. No adverse effects of SPRAVATO® nasal spray on cognitive functioning were observed in a one-year open-label safety study; however, the long-term cognitive effects of SPRAVATO® have not been evaluated beyond one year.

Impaired Ability to Drive and Operate Machinery: Before SPRAVATO® administration, instruct patients not to engage in potentially hazardous activities requiring complete mental alertness and motor coordination, such as driving a motor vehicle or operating machinery, until the next day following a restful sleep. Patients will need to arrange transportation home following treatment with SPRAVATO®.

Ulcerative or Interstitial Cystitis: Cases of ulcerative or interstitial cystitis have been reported in individuals with long-term off-label use or misuse/abuse of ketamine. In clinical studies with SPRAVATO® nasal spray, there was a higher rate of lower urinary tract symptoms (pollakiuria, dysuria, micturition urgency, nocturia, and cystitis) in SPRAVATO®-treated patients than in placebo-treated patients. No cases of esketamine-related interstitial cystitis were observed in any of the studies, which involved treatment for up to a year.

Monitor for urinary tract and bladder symptoms during the course of treatment with SPRAVATO® and refer to an appropriate healthcare provider as clinically warranted.

PREGNANCY, EMBRYO-FETAL TOXICITY, AND LACTATION

SPRAVATO® is not recommended during pregnancy. SPRAVATO® may cause fetal harm when administered to pregnant women. Advise pregnant women of the potential risk to an infant exposed to SPRAVATO® *in utero*. Advise women of reproductive potential to consider pregnancy planning and prevention.

There are risks to the mother associated with untreated depression in pregnancy. If a woman becomes pregnant while being treated with SPRAVATO®, treatment with SPRAVATO® should be discontinued and the patient should be counseled about the potential risk to the fetus.

Pregnancy Exposure Registry: There is a pregnancy exposure registry that monitors pregnancy outcomes in women exposed to antidepressants, including SPRAVATO®, during pregnancy.

Healthcare providers are encouraged to register patients by contacting the National Pregnancy Registry for Antidepressants at 1-844-405-6185 or online at <https://womensmentalhealth.org/clinical-and-research-programs/pregnancyregistry/antidepressants/>.

SPRAVATO® is present in human milk. Because of the potential for neurotoxicity, advise patients that breastfeeding is not recommended during treatment with SPRAVATO®.

SELECT USE IN SPECIFIC POPULATIONS

Geriatric Use: No overall differences in the safety profile were observed between patients 65 years of age and older and patients younger than 65 years of age. At the end of a 4-week, randomized, double-blind study, there was no statistically significant difference between groups on the primary efficacy endpoint.

Hepatic Impairment: SPRAVATO®-treated patients with moderate hepatic impairment may need to be monitored for adverse reactions for a longer period of time.

SPRAVATO® has not been studied in patients with severe hepatic impairment (Child-Pugh class C). Use in this population is not recommended.

ADVERSE REACTIONS

The most common adverse reactions with SPRAVATO® plus oral antidepressant (incidence $\geq 5\%$ and at least twice that of placebo nasal spray plus oral antidepressant) were:

TRD: dissociation, dizziness, nausea, sedation, vertigo, hypoesthesia, anxiety, lethargy, blood pressure increased, vomiting, and feeling drunk.

Treatment of depressive symptoms in adults with MDD with acute suicidal ideation or behavior: dissociation,

dizziness, sedation, blood pressure increased, hypoesthesia, vomiting, euphoric mood, and vertigo.

Please see full [Prescribing Information](#), including **Boxed WARNINGS**, and [Medication Guide](#) for SPRAVATO®.

cp-170362v2

COMMUNICATIONS TEMPLATE FOR PATIENTS

At the discretion of your communications leader, the below communication may be tailored based on your specific needs and shared with consumers. Please use the [Consumer Indications and ISI](#).

SUBJECT LINE/TITLE: Welcome to [Treatment Center]! We are here for you through your treatment journey.

Welcome to [Treatment Center]! We are happy to be able to provide you with SPRAVATO® (esketamine) CIII, a nasal spray that can be taken with an oral antidepressant to treat treatment-resistant depression (TRD) in adults and depressive symptoms in adults with MDD with acute suicidal ideation or behavior. SPRAVATO® is not for use as a medicine to prevent or relieve pain (anesthetic). It is not known if SPRAVATO® is safe or effective as an anesthetic medicine.

It is not known if SPRAVATO® is safe and effective for use in preventing suicide or in reducing suicidal thoughts or actions. SPRAVATO® is not for use in place of hospitalization if your healthcare provider determines that hospitalization is needed, even if improvement is experienced after the first dose of SPRAVATO®.

It is not known if SPRAVATO® is safe and effective in children.

SPRAVATO® can cause serious side effects – like sleepiness (sedation), fainting, dizziness, spinning sensation, anxiety, or feeling disconnected from yourself, your thoughts, feelings, space and time (dissociation). Because of the risks for sedation, dissociation, and abuse and misuse, SPRAVATO® is only available through a restricted program called the SPRAVATO® Risk Evaluation and Mitigation Strategy (REMS) Program. This means that you can receive treatment with SPRAVATO® only at treatment centers certified by the SPRAVATO® REMS Program and you must be enrolled in the program.

At [Treatment Center], you can be assured that we have completed all of the requirements for REMS certification. The medical staff at our certified treatment center are trained to prescribe, dispense, and administer SPRAVATO®, and we have established processes and procedures in accordance with the REMS requirements.

Before treatment:

At [Treatment Center], we understand that finding the right treatment for you can be a difficult process. Our doctors, nurses and staff are committed to partnering with you through the process of deciding on whether SPRAVATO® is right for you and to provide a well-coordinated treatment experience.

Once you and your doctor have decided that SPRAVATO® is right for you, please work with your primary care doctor to complete a patient intake form to get started with SPRAVATO®.

Our doctors and nurses are proactive about coordinating care and will ensure an open line of communication with your primary care doctor about your progress. In addition, our care team will help you with a clear understanding of what to expect with SPRAVATO® treatment sessions. We will work with your insurance provider to confirm your coverage and your costs prior to SPRAVATO® treatment.

Day of treatment:

On your treatment days, you will need to arrange to be driven or accompanied by an adult to and from [Treatment Center].

On the day of your SPRAVATO® treatment, one of our doctors will provide direct medical supervision to you as you self-administer SPRAVATO®. You will then be provided a comfortable area where you can relax while we will monitor you after every dose for at least two hours for any immediate side effects of sleepiness, fainting, dizziness, spinning sensation, or feeling disconnected. Your doctors and nurses will also watch for any changes in vital signs.

After treatment:

Please keep in mind that after treatment and following the observation period, you should not drive or operate machinery until the day after a treatment session, after a night of restful sleep.

You must return to a treatment center for SPRAVATO® therapy – you will not be able to self-administer SPRAVATO® at

home.

To learn more about our treatment center and how we can work together to provide you with SPRAVATO[®], please contact [\[designated treatment center contact\]](#).

For more information about SPRAVATO[®], please refer to the manufacturer's [Prescribing Information](#) and [Medication Guide](#) or visit www.spravato.com.

SPRAVATO[®] is a registered trademark of Johnson & Johnson and its affiliated companies.

CONSUMER INDICATIONS AND IMPORTANT SAFETY INFORMATION

What is SPRAVATO® (esketamine) CIII nasal spray?

SPRAVATO® is a prescription medicine, used along with an antidepressant taken by mouth to treat:

- Adults with treatment-resistant depression (TRD)
- Depressive symptoms in adults with major depressive disorder (MDD) with suicidal thoughts or actions

SPRAVATO® is not for use as a medicine to prevent or relieve pain (anesthetic). It is not known if SPRAVATO® is safe or effective as an anesthetic medicine.

It is not known if SPRAVATO® is safe and effective for use in preventing suicide or in reducing suicidal thoughts or actions. SPRAVATO® is not for use in place of hospitalization if your healthcare provider determines that hospitalization is needed, even if improvement is experienced after the first dose of SPRAVATO®.

It is not known if SPRAVATO® is safe and effective in children.

IMPORTANT SAFETY INFORMATION

What is the most important information I should know about SPRAVATO®?

SPRAVATO® can cause serious side effects, including:

- **Sedation and dissociation.** SPRAVATO® may cause sleepiness (sedation), fainting, dizziness, spinning sensation, anxiety, or feeling disconnected from yourself, your thoughts, feelings, space and time (dissociation).
 - Tell your healthcare provider right away if you feel like you cannot stay awake or if you feel like you are going to pass out.
 - Your healthcare provider must monitor you for serious side effects for at least 2 hours after taking SPRAVATO®. Your healthcare provider will decide when you are ready to leave the healthcare setting.
- **Abuse and misuse.** There is a risk for abuse and physical and psychological dependence with SPRAVATO® treatment. Your healthcare provider should check you for signs of abuse and dependence before and during treatment with SPRAVATO®.
 - Tell your healthcare provider if you have ever abused or been dependent on alcohol, prescription medicines, or street drugs.
 - Your healthcare provider can tell you more about the differences between physical and psychological dependence and drug addiction.
- **SPRAVATO® Risk Evaluation and Mitigation Strategy (REMS).** Because of the risks for sedation, dissociation, and abuse and misuse, SPRAVATO® is only available through a restricted program called the SPRAVATO® Risk Evaluation and Mitigation Strategy (REMS) Program. SPRAVATO® can only be administered at healthcare settings certified in the SPRAVATO® REMS Program. Patients

treated in outpatient healthcare settings (e.g., medical offices and clinics) must be enrolled in the program.

- **Increased risk of suicidal thoughts and actions.** Antidepressant medicines may increase suicidal thoughts and actions in some people 24 years of age and younger, **especially within the first few months of treatment or when the dose is changed.**

SPRAVATO® is not for use in children

- Depression and other serious mental illnesses are the most important causes of suicidal thoughts and actions. Some people may have a higher risk of having suicidal thoughts or actions. These include people who have (or have a family history of) depression or a history of suicidal thoughts or actions.
- **How can I watch for and try to prevent suicidal thoughts and actions in myself or a family member?**
 - Pay close attention to any changes, especially sudden changes, in mood, behavior, thoughts, or feelings, or if you develop suicidal thoughts or actions.
 - Tell your healthcare provider right away if you have any new or sudden changes in mood, behavior, thoughts, or feelings.
 - Keep all follow-up visits with your healthcare provider as scheduled. Call your healthcare provider between visits as needed, especially if you have concerns about symptoms.
- **Tell your healthcare provider right away if you or your family member have any of the following symptoms, especially if they are new, worse, or worry you:**
 - suicide attempts
 - thoughts about suicide or dying
 - worsening depression
 - other unusual changes in behavior or mood

Do not take SPRAVATO® if you:

- have blood vessel (aneurysmal vascular) disease (including in the brain, chest, abdominal aorta, arms and legs)
- have an abnormal connection between your veins and arteries (arteriovenous malformation)
- have a history of bleeding in the brain
- are allergic to esketamine, ketamine, or any of the other ingredients in SPRAVATO®.

If you are not sure if you have any of the above conditions, talk to your healthcare provider before taking SPRAVATO®.

Before you take SPRAVATO®, tell your healthcare provider about all of your medical conditions, including if you:

- have heart or brain problems, including:
 - high blood pressure (hypertension)
 - slow or fast heartbeats that cause shortness of breath, chest pain, lightheadedness, or fainting
 - history of heart attack
 - history of stroke
 - heart valve disease or heart failure
 - history of brain injury or any condition where there is increased pressure in the brain
- have liver problems
- have ever had a condition called “psychosis” (see, feel, or hear things that are not there, or believe in things that are not true).
- are pregnant or plan to become pregnant. SPRAVATO® may harm your baby. You should not take SPRAVATO® if you are pregnant.
 - Tell your healthcare provider right away if you become pregnant during treatment with SPRAVATO®.
 - If you are able to become pregnant, talk to your healthcare provider about methods to prevent pregnancy during treatment with SPRAVATO®.
 - There is a pregnancy registry for women who are exposed to SPRAVATO® during pregnancy. The purpose of the registry is to collect information about the health of women exposed to SPRAVATO® and their baby. If you become pregnant during treatment with SPRAVATO®, talk to your healthcare provider about registering with the National Pregnancy Registry for Antidepressants at 1-844-405-6185 or online at <https://womensmentalhealth.org/clinical-and-research-programs/pregnancyregistry/antidepressants/>.
- are breastfeeding or plan to breastfeed. You should not breastfeed during treatment with SPRAVATO®.

Tell your healthcare provider about all the medicines that you take, including prescription and over-the-counter medicines, vitamins and herbal supplements. Taking SPRAVATO® with certain medicine may cause side effects.

Especially tell your healthcare provider if you take central nervous system (CNS) depressants, psychostimulants, or monoamine oxidase inhibitors (MAOIs) medicines. Keep a list of them to show to your healthcare provider and pharmacist when you get a new medicine.

How will I take SPRAVATO®?

- You will take SPRAVATO® nasal spray yourself, under the supervision of a healthcare provider in a healthcare setting. Your healthcare provider will show you how to use the SPRAVATO® nasal spray device.
- Your healthcare provider will tell you how much SPRAVATO® you will take and when you will take it.
- Follow your SPRAVATO® treatment schedule exactly as your healthcare provider tells you to.

- During and after each use of the SPRAVATO® nasal spray device, you will be checked by a healthcare provider who will decide when you are ready to leave the healthcare setting.
- You will need to plan for a caregiver or family member to drive you home after taking SPRAVATO®.
- If you miss a SPRAVATO® treatment, your healthcare provider may change your dose and treatment schedule.
- Some people taking SPRAVATO® get nausea and vomiting. You should not eat for at least 2 hours before taking SPRAVATO® and not drink liquids at least 30 minutes before taking SPRAVATO®.
- If you take a nasal corticosteroid or nasal decongestant medicine take these medicines at least 1 hour before taking SPRAVATO®.

What should I avoid while taking SPRAVATO®?

Do not drive, operate machinery, or do anything where you need to be completely alert after taking SPRAVATO®. **Do not** take part in these activities until the next day following a restful sleep. See **“What is the most important information I should know about SPRAVATO®?”**

What are the possible side effects of SPRAVATO®?

SPRAVATO® may cause serious side effects including:

- See **“What is the most important information I should know about SPRAVATO®?”**
- **Increased blood pressure.** SPRAVATO® can cause a temporary increase in your blood pressure that may last for about 4 hours after taking a dose. Your healthcare provider will check your blood pressure before taking SPRAVATO® and for at least 2 hours after you take SPRAVATO®. Tell your healthcare provider right away if you get chest pain, shortness of breath, sudden severe headache, change in vision, or seizures after taking SPRAVATO®.
- **Problems with thinking clearly.** Tell your healthcare provider if you have problems thinking or remembering.
- **Bladder problems.** Tell your healthcare provider if you develop trouble urinating, such as a frequent or urgent need to urinate, pain when urinating, or urinating frequently at night.

The most common side effects of SPRAVATO® when used along with an antidepressant taken by mouth include:

- | | |
|--|--|
| <ul style="list-style-type: none"> • feeling disconnected from yourself, your thoughts, feelings and things around you • dizziness • nausea • feeling sleepy • spinning sensation | <ul style="list-style-type: none"> • decreased feeling of sensitivity (numbness) • feeling anxious • lack of energy • increased blood pressure • vomiting • feeling drunk • feeling very happy or excited |
|--|--|

If these common side effects occur, they usually happen right after taking SPRAVATO® and go away the same day.

These are not all the possible side effects of SPRAVATO®.

Call your doctor for medical advice about side effects. You may report side effects to FDA at 1-800-FDA-1088.

Please see full [Prescribing Information](#), including **Boxed WARNINGS, and [Medication Guide](#) for SPRAVATO® and discuss any questions you may have with your healthcare provider.**

cp-170363v1

SPRAVATO®

(esketamine) nasal spray, CIII

HIGHLIGHTS OF PRESCRIBING INFORMATION

These highlights do not include all the information needed to use SPRAVATO® safely and effectively. See full prescribing information for SPRAVATO®.

SPRAVATO® (esketamine) nasal spray, CIII
Initial U.S. Approval: 1970 (ketamine)

WARNING: SEDATION; DISSOCIATION; ABUSE AND MISUSE; and SUICIDAL THOUGHTS AND BEHAVIORS

See full prescribing information for complete boxed warning.

- Risk for sedation and dissociation after administration. Monitor patients for at least two hours after administration. (5.1, 5.2)
- Potential for abuse and misuse. Consider the risks and benefits of prescribing SPRAVATO prior to using in patients at higher risk of abuse. Monitor patients for signs and symptoms of abuse and misuse. (5.3)
- SPRAVATO is only available through a restricted program called the SPRAVATO REMS. (5.4)
- Increased risk of suicidal thoughts and behaviors in pediatric and young adult patients taking antidepressants. Closely monitor all antidepressant-treated patients for clinical worsening and emergence of suicidal thoughts and behaviors. SPRAVATO is not approved for use in pediatric patients. (5.5)

RECENT MAJOR CHANGES

Indications and Usage (1)	07/2020
Dosage and Administration (2.3, 2.6)	07/2020
Warnings and Precautions (5.1, 5.2, 5.4, 5.6)	07/2020

INDICATIONS AND USAGE

SPRAVATO® is a non-competitive N-methyl D-aspartate (NMDA) receptor antagonist indicated, in conjunction with an oral antidepressant, for the treatment of:

- Treatment-resistant depression (TRD) in adults. (1)
- Depressive symptoms in adults with major depressive disorder (MDD) with acute suicidal ideation or behavior. (1)

Limitations of Use:

- The effectiveness of SPRAVATO in preventing suicide or in reducing suicidal ideation or behavior has not been demonstrated. Use of SPRAVATO does not preclude the need for hospitalization if clinically warranted, even if patients experience improvement after an initial dose of SPRAVATO. (1)
- SPRAVATO is not approved as an anesthetic agent. The safety and effectiveness of SPRAVATO as an anesthetic agent have not been established. (1)

DOSAGE AND ADMINISTRATION

- Administer SPRAVATO intranasally under the supervision of a healthcare provider. (2.1)
- Assess blood pressure prior to and after administration. (2.1)

FULL PRESCRIBING INFORMATION: CONTENTS*

WARNING: SEDATION; DISSOCIATION; ABUSE AND MISUSE; and SUICIDAL THOUGHTS AND BEHAVIORS

1 INDICATIONS AND USAGE

2 DOSAGE AND ADMINISTRATION

- 2.1 Important Considerations Prior to Initiating and During Therapy
- 2.2 Treatment-Resistant Depression
- 2.3 Depressive Symptoms in Patients with Major Depressive Disorder with Acute Suicidal Ideation or Behavior
- 2.4 Administration Instructions
- 2.5 Post-Administration Observation
- 2.6 Missed Treatment Session(s)

3 DOSAGE FORMS AND STRENGTHS

4 CONTRAINDICATIONS

5 WARNINGS AND PRECAUTIONS

- 5.1 Sedation
- 5.2 Dissociation
- 5.3 Abuse and Misuse
- 5.4 SPRAVATO Risk Evaluation and Mitigation Strategy (REMS)
- 5.5 Suicidal Thoughts and Behaviors in Adolescents and Young Adults
- 5.6 Increase in Blood Pressure
- 5.7 Cognitive Impairment
- 5.8 Impaired Ability to Drive and Operate Machinery
- 5.9 Ulcerative or Interstitial Cystitis
- 5.10 Embryo-fetal Toxicity

6 ADVERSE REACTIONS

- 6.1 Clinical Trials Experience

7 DRUG INTERACTIONS

- 7.1 Central Nervous System Depressants
- 7.2 Psychostimulants
- 7.3 Monoamine Oxidase Inhibitors (MAOIs)

SPRAVATO® (esketamine) nasal spray, CIII

- *TRD*: Evidence of therapeutic benefit should be evaluated at the end of the 4-week induction phase to determine need for continued treatment. (2.2)
- *Depressive symptoms in MDD with acute suicidal ideation or behavior*: Evidence of therapeutic benefit should be evaluated after 4 weeks to determine need for continued treatment. Treatment beyond 4 weeks has not been systematically evaluated. (2.3)
- See Full Prescribing Information for recommended dosage. (2.2, 2.3)
- See Full Prescribing Information for important administration instructions. (2.4)

DOSAGE FORMS AND STRENGTHS

Nasal Spray: 28 mg of esketamine per device. Each nasal spray device delivers two sprays containing a total of 28 mg of esketamine. (3)

CONTRAINDICATIONS

- Aneurysmal vascular disease (including thoracic and abdominal aorta, intracranial and peripheral arterial vessels) or arteriovenous malformation. (4)
- Intracerebral hemorrhage. (4)
- Hypersensitivity to esketamine, ketamine, or any of the excipients. (4)

WARNINGS AND PRECAUTIONS

- *Increases in Blood Pressure*: Patients with cardiovascular and cerebrovascular conditions and risk factors may be at an increased risk of associated adverse effects. (5.6)
- *Cognitive Impairment*: SPRAVATO may impair attention, judgment, thinking, reaction speed and motor skills. (5.7)
- *Impaired Ability to Drive and Operate Machinery*: Do not drive or operate machinery until the next day after a restful sleep. (5.8)
- *Embryo-fetal Toxicity*: May cause fetal harm. Consider pregnancy planning and prevention in females of reproductive potential. (5.10, 8.1, 8.3)

ADVERSE REACTIONS

The most commonly observed adverse reactions (incidence $\geq 5\%$ and at least twice that of placebo plus oral antidepressant):

- TRD: dissociation, dizziness, nausea, sedation, vertigo, hypoesthesia, anxiety, lethargy, blood pressure increased, vomiting, and feeling drunk. (6)
- Treatment of depressive symptoms in adults with MDD with acute suicidal ideation or behavior: dissociation, dizziness, sedation, blood pressure increased, hypoesthesia, vomiting, euphoric mood, and vertigo. (6)

To report SUSPECTED ADVERSE REACTIONS, contact Janssen Pharmaceuticals, Inc. at 1-800-JANSSEN (1-800-526-7736) or FDA at 1-800-FDA-1088 or www.fda.gov/medwatch.

USE IN SPECIFIC POPULATIONS

- Lactation: Breastfeeding not recommended. (8.2)

See 17 for PATIENT COUNSELING INFORMATION and Medication Guide.

Revised: 07/2020

8 USE IN SPECIFIC POPULATIONS

- 8.1 Pregnancy
- 8.2 Lactation
- 8.3 Females and Males of Reproductive Potential
- 8.4 Pediatric Use
- 8.5 Geriatric Use
- 8.6 Hepatic Impairment

9 DRUG ABUSE AND DEPENDENCE

- 9.1 Controlled Substance
- 9.2 Abuse
- 9.3 Dependence

10 OVERDOSAGE

11 DESCRIPTION

12 CLINICAL PHARMACOLOGY

- 12.1 Mechanism of Action
- 12.2 Pharmacodynamics
- 12.3 Pharmacokinetics

13 NONCLINICAL TOXICOLOGY

- 13.1 Carcinogenesis, Mutagenesis, Impairment of Fertility
- 13.2 Animal Toxicology and/or Pharmacology

14 CLINICAL STUDIES

- 14.1 Treatment-Resistant Depression
- 14.2 Depressive Symptoms in Patients with Major Depressive Disorder with Acute Suicidal Ideation or Behavior
- 14.3 Special Safety Studies

16 HOW SUPPLIED/STORAGE AND HANDLING

17 PATIENT COUNSELING INFORMATION

*Sections or subsections omitted from the full prescribing information are not listed.

FULL PRESCRIBING INFORMATION

WARNING: SEDATION; DISSOCIATION; ABUSE AND MISUSE; and SUICIDAL THOUGHTS AND BEHAVIORS

Sedation

- Patients are at risk for sedation after administration of SPRAVATO [see *Warnings and Precautions (5.1)*].

Dissociation

- Patients are at risk for dissociative or perceptual changes after administration of SPRAVATO [see *Warnings and Precautions (5.2)*].

Because of the risks of sedation and dissociation, patients must be monitored for at least 2 hours at each treatment session, followed by an assessment to determine when the patient is considered clinically stable and ready to leave the healthcare setting [see *Warnings and Precautions (5.1, 5.2)*].

Abuse and Misuse

- SPRAVATO has the potential to be abused and misused. Consider the risks and benefits of prescribing SPRAVATO prior to use in patients at higher risk of abuse. Monitor patients for signs and symptoms of abuse and misuse [see *Warnings and Precautions (5.3)*].

Because of the risks of serious adverse outcomes resulting from sedation, dissociation, and abuse and misuse, SPRAVATO is only available through a restricted program under a Risk Evaluation and Mitigation Strategy (REMS) called the SPRAVATO REMS [see *Warnings and Precautions (5.4)*].

Suicidal Thoughts and Behaviors

Antidepressants increased the risk of suicidal thoughts and behavior in pediatric and young adult patients in short-term studies. Closely monitor all antidepressant-treated patients for clinical worsening, and for emergence of suicidal thoughts and behaviors. SPRAVATO is not approved for use in pediatric patients [see *Warnings and Precautions (5.5)*].

1 INDICATIONS AND USAGE

SPRAVATO® is indicated, in conjunction with an oral antidepressant, for the treatment of:

- Treatment-resistant depression (TRD) in adults
- Depressive symptoms in adults with major depressive disorder (MDD) with acute suicidal ideation or behavior

Limitations of Use:

- The effectiveness of SPRAVATO in preventing suicide or in reducing suicidal ideation or behavior has not been demonstrated [see *Clinical Studies (14.2)*]. Use of SPRAVATO does not preclude the need for hospitalization if clinically warranted, even if patients experience improvement after an initial dose of SPRAVATO.
- SPRAVATO is not approved as an anesthetic agent. The safety and effectiveness of SPRAVATO as an anesthetic agent have not been established.

2 DOSAGE AND ADMINISTRATION

2.1 Important Considerations Prior to Initiating and During Therapy

SPRAVATO must be administered under the direct supervision of a healthcare provider. A treatment session consists of nasal administration of SPRAVATO and post-administration observation under supervision.

Blood Pressure Assessment Before and After Treatment

- Assess blood pressure prior to dosing with SPRAVATO [see *Warnings and Precautions (5.6)*].
- If baseline blood pressure is elevated (e.g., >140 mmHg systolic, >90 mmHg diastolic), consider the risks of short term increases in blood pressure and benefit of SPRAVATO treatment [see *Warnings and Precautions (5.6)*]. Do not administer SPRAVATO if an increase in blood pressure or intracranial pressure poses a serious risk [see *Contraindications (4)*].
- After dosing with SPRAVATO, reassess blood pressure at approximately 40 minutes (which corresponds with the C_{max}) and subsequently as clinically warranted.
- If blood pressure is decreasing and the patient appears clinically stable for at least two hours, the patient may be discharged at the end of the post-dose monitoring period; if not, continue to monitor [see *Warnings and Precautions (5.6)*].

Food and Liquid Intake Recommendations Prior to Administration

Because some patients may experience nausea and vomiting after administration of SPRAVATO [see *Adverse Reactions (6.1)*], advise patients to avoid food for at least 2 hours before administration and to avoid drinking liquids at least 30 minutes prior to administration.

Nasal Corticosteroid or Nasal Decongestant

Patients who require a nasal corticosteroid or nasal decongestant on a dosing day should administer these medications at least 1 hour before SPRAVATO [see *Clinical Pharmacology (12.3)*].

2.2 Treatment-Resistant Depression

Administer SPRAVATO in conjunction with an oral antidepressant (AD).

The recommended dosage of SPRAVATO for the treatment of TRD in adults is shown in Table 1. Dosage adjustments should be made based on efficacy and tolerability. Evidence of therapeutic benefit should be evaluated at the end of the induction phase to determine need for continued treatment.

Table 1: Recommended Dosage for SPRAVATO for TRD

		Adults
Induction Phase	Weeks 1 to 4:	Day 1 starting dose: 56 mg
	Administer twice per week	Subsequent doses: 56 mg or 84 mg
Maintenance Phase	Weeks 5 to 8:	56 mg or 84 mg
	Week 9 and after:	
	Administer every 2 weeks or once weekly*	56 mg or 84 mg

* Dosing frequency should be individualized to the least frequent dosing to maintain remission/response.

2.3 Depressive Symptoms in Patients with Major Depressive Disorder with Acute Suicidal Ideation or Behavior

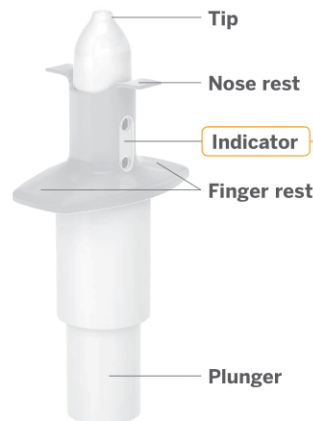
Administer SPRAVATO in conjunction with an oral antidepressant (AD).

The recommended dosage of SPRAVATO for the treatment of depressive symptoms in adults with MDD with acute suicidal ideation or behavior is 84 mg twice per week for 4 weeks. Dosage may be reduced to 56 mg twice per week based on tolerability. After 4 weeks of treatment with SPRAVATO, evidence of therapeutic benefit should be evaluated to determine need for continued treatment. The use of SPRAVATO, in conjunction with an oral antidepressant, beyond 4 weeks has not been systematically evaluated in the treatment of depressive symptoms in patients with MDD with acute suicidal ideation or behavior.

2.4 Administration Instructions

SPRAVATO is for nasal use only. The nasal spray device delivers a total of 28 mg of esketamine. To prevent loss of medication, do not prime the device before use. Use 2 devices (for a 56 mg dose) or 3 devices (for an 84 mg dose), with a 5-minute rest between use of each device. Follow these administration instructions and read the *Instructions for Use* before administration:

Nasal Spray Device



Each device delivers two sprays containing a total of 28 mg of esketamine.

Indicator

One device contains 2 sprays. (1 spray for each nostril)

2 green dots (0 mg delivered)



1 green dot



No green dots

Two sprays (28 mg) delivered



Step 1 Get ready

Before first device only:



Instruct patient to blow nose **before first device only**.

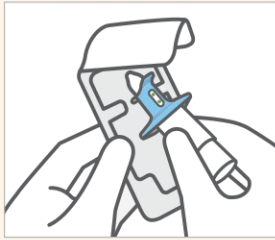


Confirm required number of devices.

56 mg = 2 devices

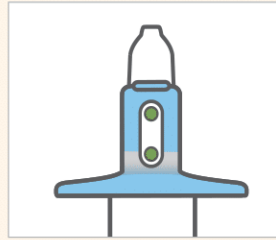
84 mg = 3 devices

Step 2 Prepare device



Healthcare professional:

- Check expiration date ('EXP'). If expired, get a new device.
- Peel blister and remove device.



Healthcare professional:

- **Do not prime device.** This will result in a loss of medication.
- Check that indicator shows **2 green dots**. If not, dispose of device and get a new one.
- Hand device to patient.

Step 3 Prepare patient



Instruct the patient to:

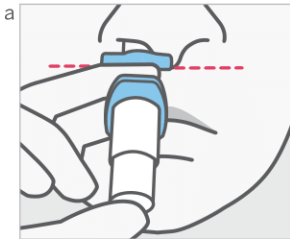
- Hold device as shown with the thumb gently supporting the plunger.
- **Do not** press the plunger.



Instruct the patient to:

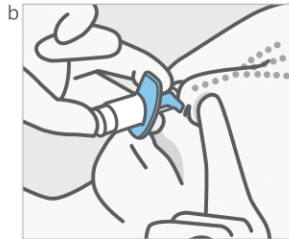
- Recline head at about **45 degrees** during administration to keep medication inside the nose.

Step 4 Patient sprays once into each nostril



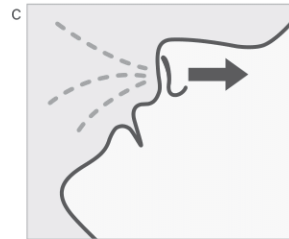
Instruct the patient to:

- Insert tip straight into the **first nostril**.
- Nose rest should touch the **skin between the nostrils**.



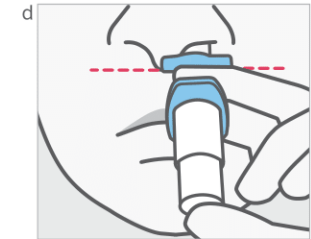
Instruct the patient to:

- Close opposite nostril.
- **Breathe in through nose** while pushing plunger all the way up until it stops.



Instruct the patient to:

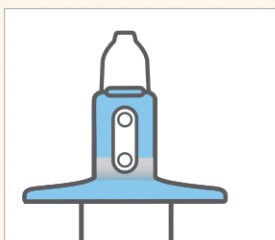
- **Sniff gently** after spraying to keep medication inside nose.



Instruct the patient to:

- Switch hands to insert tip into the **second nostril**.
- Repeat Step 4 to deliver second spray.

Step 5 Confirm delivery and rest



Healthcare professional:

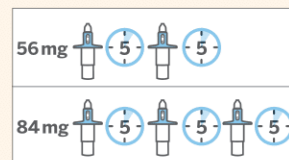
- Take device from patient.
- **Check that indicator shows no green dots.** If you see a green dot, have patient spray again into the second nostril.
- Check indicator again to confirm device is empty.



Instruct the patient to:

- Rest in a comfortable position (preferably, semi-reclined) for **5 minutes after each device**.
- If liquid drips out, dab nose with a tissue.
- **Do not** blow nose.

Next device



Healthcare professional:

- **Repeat Steps 2-5** for the next device.

IMPORTANT: Ensure that patient **waits 5 minutes after each device** to allow medication to absorb.

Disposal

Dispose of used device(s) per facility procedure for a Schedule III drug product and per applicable federal, state, and local regulations.

2.5 Post-Administration Observation

During and after SPRAVATO administration at each treatment session, observe the patient for at least 2 hours until the patient is safe to leave [see *Warnings and Precautions* (5.1, 5.2, 5.6, 5.8)]. Before SPRAVATO administration, instruct patients not to engage in potentially hazardous activities, such as driving a motor vehicle or operating machinery, until the next day after a restful sleep.

2.6 Missed Treatment Session(s)

If a patient misses treatment session(s), provided there is no worsening of their depressive symptoms, the patient should continue the current dosing schedule.

For patients who miss treatment session(s) during maintenance treatment and have worsening of depression symptoms, per clinical judgement, consider returning to the previous dosing schedule (e.g., if doses missed during weekly dosing, revert to twice weekly dosing).

3 DOSAGE FORMS AND STRENGTHS

Nasal Spray: 28 mg of esketamine per device. Each nasal spray device delivers two sprays containing a total of 28 mg esketamine.

4 CONTRAINDICATIONS

SPRAVATO is contraindicated in patients with:

- Aneurysmal vascular disease (including thoracic and abdominal aorta, intracranial, and peripheral arterial vessels) or arteriovenous malformation [see *Warnings and Precautions* (5.6)]
- History of intracerebral hemorrhage [see *Warnings and Precautions* (5.6)]
- Hypersensitivity to esketamine, ketamine, or any of the excipients.

5 WARNINGS AND PRECAUTIONS

5.1 Sedation

In clinical trials, 48% to 61% of SPRAVATO-treated patients developed sedation based on the Modified Observer's Assessment of Alertness/Sedation scale (MOAA/S) [see *Adverse Reactions* (6.1)], and 0.3% to 0.4% of SPRAVATO-treated patients experienced loss of consciousness (MOAA/S score of 0).

Because of the possibility of delayed or prolonged sedation, patients must be monitored by a healthcare provider for at least 2 hours at each treatment session, followed by an assessment to determine when the patient is considered clinically stable and ready to leave the healthcare setting [see *Dosage and Administration* (2.4)]. Closely monitor for sedation with concomitant use of SPRAVATO with CNS depressants [see *Drug Interaction* (7.1)].

SPRAVATO is available only through a restricted program under a REMS [see *Warnings and Precautions* (5.4)].

5.2 Dissociation

The most common psychological effects of SPRAVATO were dissociative or perceptual changes (including distortion of time, space and illusions), derealization and depersonalization (61% to 84% of SPRAVATO-treated patients developed dissociative or perceptual changes based on the Clinician-Administered Dissociative States Scale) [see *Adverse Reactions* (6.1)]. Given its potential to induce dissociative effects, carefully assess patients with psychosis before administering SPRAVATO; treatment should be initiated only if the benefit outweighs the risk.

Because of the risks of dissociation, patients must be monitored by a healthcare provider for at least 2 hours at each treatment session, followed by an assessment to determine when the patient is considered clinically stable and ready to leave the healthcare setting [see *Dosage and Administration* (2.4)].

SPRAVATO is available only through a restricted program under a REMS [see *Warnings and Precautions* (5.4)].

5.3 Abuse and Misuse

SPRAVATO contains esketamine, a Schedule III controlled substance (CIII), and may be subject to abuse and diversion. Assess each patient's risk for abuse or misuse prior to prescribing SPRAVATO and monitor all patients receiving SPRAVATO for the development of these behaviors or conditions, including drug-seeking behavior, while on therapy. Contact local state professional licensing board or state-controlled substances authority for information on how to prevent and detect abuse or diversion of SPRAVATO. Individuals with a history of drug abuse or dependence are at greater risk; therefore, use careful consideration prior to treatment of individuals with a history of substance use disorder and monitor for signs of abuse or dependence [see *Drug Abuse and Dependence* (9)].

SPRAVATO is available only through a restricted program under a REMS [see *Warnings and Precautions* (5.4)].

5.4 SPRAVATO Risk Evaluation and Mitigation Strategy (REMS)

SPRAVATO is available only through a restricted program under a REMS called the SPRAVATO REMS because of the risks of serious adverse outcomes from sedation, dissociation, and abuse and misuse [see *Boxed Warning and Warnings and Precautions* (5.1, 5.2, 5.3)].

Important requirements of the SPRAVATO REMS include the following:

- Healthcare settings must be certified in the program and ensure that SPRAVATO is:
 - Only dispensed and administered in healthcare settings.
 - Patients treated in outpatient settings (e.g. medical offices and clinics) must be enrolled in the program.
 - Administered by patients under the direct observation of a healthcare provider and that patients are monitored by a healthcare provider for at least 2 hours after administration of SPRAVATO [see *Dosage and Administration* (2.4)].
- Pharmacies must be certified in the REMS and must only dispense SPRAVATO to healthcare settings that are certified in the program.

Further information, including a list of certified pharmacies is available at www.SPRAVATOrems.com or 1-855-382-6022.

5.5 Suicidal Thoughts and Behaviors in Adolescents and Young Adults

In pooled analyses of placebo-controlled trials of antidepressant drugs (SSRIs and other antidepressant classes) that included approximately 77,000 adult patients and 4,500 pediatric patients (SPRAVATO is not approved in pediatric patients), the incidence of suicidal thoughts and behaviors in patients age 24 years and younger was greater than in placebo-treated patients. There was considerable variation in risk of suicidal thoughts and behaviors among drugs, but there was an increased risk identified in young patients for most drugs studied. There were differences in absolute risk of suicidal thoughts and behaviors across the different indications, with the highest incidence in patients with major depressive disorder (MDD). The drug-placebo differences in the number of cases of suicidal thoughts and behaviors per 1000 patients treated are provided in Table 2.

Table 2: Risk Differences of the Number of Patients with Suicidal Thoughts or Behaviors in the Pooled Placebo-Controlled Trials of Antidepressants in Pediatric* and Adult Patients

Age Range (Years)	Drug-Placebo Difference in Number of Patients with Suicidal Thoughts or Behaviors per 1000 Patients Treated
	Increases Compared to Placebo
<18	14 additional patients
18-24	5 additional patients
	Decreases Compared to Placebo
25-64	1 fewer patient
≥65	6 fewer patients

* SPRAVATO is not approved in pediatric patients.

It is unknown whether the risk of suicidal thoughts and behaviors in children, adolescents, and young adults extends to longer-term use, i.e., beyond four months. However, there is substantial evidence from placebo-controlled maintenance studies in adults with MDD that antidepressants delay the recurrence of depression and that depression itself is a risk factor for suicidal thoughts and behaviors.

Monitor all antidepressant-treated patients for clinical worsening and emergence of suicidal thoughts and behaviors, especially during the initial few months of drug therapy and at times of dosage changes. Counsel family members or caregivers of patients to monitor for changes in behavior and to alert the healthcare provider. Consider changing the therapeutic regimen, including possibly discontinuing SPRAVATO and/or the concomitant oral antidepressant, in patients whose depression is persistently worse, or who are experiencing emergent suicidal thoughts or behaviors.

5.6 Increase in Blood Pressure

SPRAVATO causes increases in systolic and/or diastolic blood pressure (BP) at all recommended doses. Increases in BP peak approximately 40 minutes after SPRAVATO administration and last approximately 4 hours [see *Adverse Reactions* (6.1)].

Approximately 8% to 19% of SPRAVATO-treated patients and 1% to 4% of placebo-treated patients experienced an increase of greater than or equal to 40 mmHg in systolic BP and/or 25 mmHg in diastolic BP in the first 1.5 hours after administration at least once during the first 4 weeks of treatment. A substantial increase in blood pressure could occur after any dose administered even if smaller blood pressure effects were observed with previous administrations. SPRAVATO is contraindicated in patients for whom an increase in BP or intracranial pressure poses a serious risk (e.g., aneurysmal vascular disease, arteriovenous malformation, history of intracerebral hemorrhage) [see *Contraindications* (4)]. Before prescribing SPRAVATO, patients with other cardiovascular and cerebrovascular conditions should be carefully assessed to determine whether the potential benefits of SPRAVATO outweigh its risks.

Assess BP prior to administration of SPRAVATO. In patients whose BP is elevated prior to SPRAVATO administration (as a general guide: >140/90 mmHg) a decision to delay SPRAVATO therapy should take into account the balance of benefit and risk in individual patients.

BP should be monitored for at least 2 hours after SPRAVATO administration [see *Dosage and Administration* (2.1, 2.4)]. Measure blood pressure around 40 minutes post-dose and subsequently as clinically warranted until values decline. If BP remains high, promptly seek assistance from practitioners experienced in BP management. Refer patients experiencing symptoms of a hypertensive crisis (e.g., chest pain, shortness of breath) or hypertensive encephalopathy (e.g., sudden severe headache, visual disturbances, seizures, diminished consciousness or focal neurological deficits) immediately for emergency care.

Closely monitor blood pressure with concomitant use of SPRAVATO with psychostimulants or monoamine oxidase inhibitors (MAOIs) [see *Drug Interactions* (7.2, 7.3)].

In patients with history of hypertensive encephalopathy, more intensive monitoring, including more frequent blood pressure and symptom assessment, is warranted because these patients are at increased risk for developing encephalopathy with even small increases in blood pressure.

5.7 Cognitive Impairment

Short-Term Cognitive Impairment

In a study in healthy volunteers, a single dose of SPRAVATO caused cognitive performance decline 40 minutes post-dose. Compared to placebo-treated subjects, SPRAVATO-treated subjects required a greater effort to complete cognitive tests at 40 minutes post-dose. Cognitive performance and mental effort were comparable between SPRAVATO and placebo at 2 hours post-dose. Sleepiness was comparable after 4 hours post-dose.

Long-Term Cognitive Impairment

Long-term cognitive and memory impairment have been reported with repeated ketamine misuse or abuse. No adverse effects of SPRAVATO nasal spray on cognitive functioning were observed in a one-year open-label safety study; however, the long-term cognitive effects of SPRAVATO have not been evaluated beyond one year.

5.8 Impaired Ability to Drive and Operate Machinery

Two placebo-controlled studies were conducted to assess the effects of SPRAVATO on the ability to drive [see Clinical Studies (14.3)]. The effects of SPRAVATO 84 mg were comparable to placebo at 6 hours and 18 hours post-dose. However, two SPRAVATO-treated subjects in one of the studies discontinued the driving test at 8 hours post-dose because of SPRAVATO-related adverse reactions.

Before SPRAVATO administration, instruct patients not to engage in potentially hazardous activities requiring complete mental alertness and motor coordination, such as driving a motor vehicle or operating machinery, until the next day following a restful sleep. Patients will need to arrange transportation home following treatment with SPRAVATO.

5.9 Ulcerative or Interstitial Cystitis

Cases of ulcerative or interstitial cystitis have been reported in individuals with long-term off-label use or misuse/abuse of ketamine. In clinical studies with SPRAVATO nasal spray, there was a higher rate of lower urinary tract symptoms (pollakiuria, dysuria, micturition urgency, nocturia, and cystitis) in SPRAVATO-treated patients than in placebo-treated patients [see Adverse Reactions (6)]. No cases of esketamine-related interstitial cystitis were observed in any of the studies, which included treatment for up to a year.

Monitor for urinary tract and bladder symptoms during the course of treatment with SPRAVATO, and refer to an appropriate healthcare provider as clinically warranted.

5.10 Embryo-fetal Toxicity

Based on published findings from pregnant animals treated with ketamine, the racemic mixture of arketamine and esketamine, SPRAVATO may cause fetal harm when administered to pregnant women. Advise pregnant women of the potential risk to an infant exposed to SPRAVATO *in utero*. Advise women of reproductive potential to consider pregnancy planning and prevention [see Use in Specific Populations (8.1, 8.3)].

6 ADVERSE REACTIONS

The following adverse reactions are discussed in more detail in other sections of the labeling:

- Sedation [see Warnings and Precautions (5.1)]
- Dissociation [see Warnings and Precautions (5.2)]
- Increase in Blood Pressure [see Warnings and Precautions (5.6)]
- Cognitive Impairment [see Warnings and Precautions (5.7)]
- Impaired Ability to Drive and Operate Machinery [see Warnings and Precautions (5.8)]
- Ulcerative or Interstitial Cystitis [see Warnings and Precautions (5.9)]
- Embryo-fetal Toxicity [see Warnings and Precautions (5.10)]

6.1 Clinical Trials Experience

Because clinical trials are conducted under widely varying conditions, adverse reaction rates observed in the clinical trials of a drug cannot be directly compared to rates in the clinical trials of another drug and may not reflect the rates observed in clinical practice.

Treatment-Resistant Depression

SPRAVATO was evaluated for safety in 1709 adults diagnosed with treatment-resistant depression (TRD) [see Clinical Studies (14.1)] from five Phase 3 studies (3 short-term and 2 long-term studies) and one Phase 2 dose-ranging study. Of all SPRAVATO-treated patients in the completed Phase 3 studies, 479 (30%) received at least 6 months of treatment, and 178 (11%) received at least 12 months of treatment.

Adverse Reactions Leading to Discontinuation of Treatment

In short-term studies in adults < 65 years old (Study 1 pooled with another 4-week study), the proportion of patients who discontinued treatment because of an adverse reaction was 4.6% in patients who received SPRAVATO plus oral AD compared to 1.4% for patients who received placebo nasal spray plus oral AD. For adults ≥ 65 years old, the proportions were 5.6% and 3.1%, respectively. In Study 2, a long-term maintenance study, the discontinuation rates because of an adverse reaction were similar for patients receiving SPRAVATO plus oral AD and placebo nasal spray plus oral AD in the maintenance phase, at 2.6% and 2.1%, respectively. Across all Phase 3 studies, adverse reactions leading to SPRAVATO discontinuation

in more than 2 patients were (in order of frequency): anxiety (1.2%), depression (0.9%), blood pressure increased (0.6%), dizziness (0.6%), suicidal ideation (0.5%), dissociation (0.4%), nausea (0.4%), vomiting (0.4%), headache (0.3%), muscular weakness (0.3%), vertigo (0.2%), hypertension (0.2%), panic attack (0.2%) and sedation (0.2%).

Most Common Adverse Reactions

The most commonly observed adverse reactions in patients treated with SPRAVATO plus oral AD (incidence ≥5% and at least twice that of placebo nasal spray plus oral AD) were dissociation, dizziness, nausea, sedation, vertigo, hypoesthesia, anxiety, lethargy, blood pressure increased, vomiting, and feeling drunk.

Table 3 shows the incidence of adverse reactions that occurred in patients treated with SPRAVATO plus oral AD at any dose and greater than patients treated with placebo nasal spray plus oral AD.

Table 3: Adverse Reactions Occurring in ≥2% of Adult TRD Patients Treated with SPRAVATO + Oral AD at Any Dose and at a Greater Rate than Patients Treated with Placebo Nasal Spray + Oral AD

	SPRAVATO + Oral AD (N=346)	Placebo + Oral AD (N=222)
Cardiac disorders		
Tachycardia*	6 (2%)	1 (0.5%)
Ear and labyrinth disorders		
Vertigo*	78 (23%)	6 (3%)
Gastrointestinal disorders		
Nausea	98 (28%)	19 (9%)
Vomiting	32 (9%)	4 (2%)
Diarrhea	23 (7%)	13 (6%)
Dry mouth	19 (5%)	7 (3%)
Constipation	11 (3%)	3 (1%)
General disorders and administration site conditions		
Feeling drunk	19 (5%)	1 (0.5%)
Feeling abnormal	12 (3%)	0 (0%)
Investigations		
Blood pressure increased*	36 (10%)	6 (3%)
Nervous system disorders		
Dizziness*	101 (29%)	17 (8%)
Sedation*	79 (23%)	21 (9%)
Headache*	70 (20%)	38 (17%)
Dysgeusia*	66 (19%)	30 (14%)
Hypoesthesia*	63 (18%)	5 (2%)
Lethargy*	37 (11%)	12 (5%)
Dysarthria*	15 (4%)	0 (0%)
Tremor	12 (3%)	2 (1%)
Mental impairment	11 (3%)	2 (1%)
Psychiatric disorders		
Dissociation*	142 (41%)	21 (9%)
Anxiety*	45 (13%)	14 (6%)
Insomnia	29 (8%)	16 (7%)
Euphoric mood	15 (4%)	2 (1%)
Renal and urinary disorders		
Pollakiuria	11 (3%)	1 (0.5%)
Respiratory, thoracic and mediastinal disorders		
Nasal discomfort*	23 (7%)	11 (5%)
Throat irritation	23 (7%)	9 (4%)
Oropharyngeal pain	9 (3%)	5 (2%)
Skin and subcutaneous tissue disorders		
Hyperhidrosis	14 (4%)	5 (2%)

*The following terms were combined:

Anxiety includes: agitation; anticipatory anxiety; anxiety; fear; feeling jittery; irritability; nervousness; panic attack; tension

Blood pressure increased includes: blood pressure diastolic increased; blood pressure increased; blood pressure systolic increased; hypertension

Dissociation includes: delusional perception; depersonalization/derealization disorder; derealization; diplopia; dissociation; dysesthesia; feeling cold; feeling hot; feeling of body temperature change; hallucination; hallucination, auditory; hallucination, visual; hyperacusis; illusion; ocular discomfort; oral dysesthesia; paresthesia; paresthesia oral; pharyngeal paresthesia; photophobia; time perception altered; tinnitus; vision blurred; visual impairment

Dizziness includes: dizziness; dizziness exertional; dizziness postural; procedural dizziness

Dysarthria includes: dysarthria; slow speech; speech disorder

Dysgeusia includes: dysgeusia; hypogeusia
Headache includes: headache; sinus headache
Hypoesthesia includes: hypoesthesia; hypoesthesia oral, hypoesthesia teeth, pharyngeal hypoesthesia
Lethargy includes: fatigue; lethargy
Nasal discomfort includes: nasal crusting; nasal discomfort; nasal dryness; nasal pruritus
Sedation includes: altered state of consciousness; hypersomnia; sedation; somnolence
Tachycardia includes: extrasystoles; heart rate increased; tachycardia
Vertigo includes: vertigo; vertigo positional

Depressive Symptoms in Patients with Major Depressive Disorder with Acute Suicidal Ideation or Behavior

SPRAVATO was evaluated for safety in 262 adults for the treatment of depressive symptoms in adults with major depressive disorder (MDD) with acute suicidal ideation or behavior [see *Clinical Studies (14.2)*] from two Phase 3 studies (Study 3 and Study 4) and one Phase 2 study. Of all SPRAVATO-treated patients in the completed Phase 3 studies, 184 (81%) received all eight doses over a 4-week treatment period.

Adverse Reactions Leading to Discontinuation of Treatment

In short-term studies in adults (pooled Study 3 and Study 4), the proportion of patients who discontinued treatment because of an adverse reaction was 6.2% for patients who received SPRAVATO plus oral AD compared to 3.6% for patients who received placebo nasal spray plus oral AD. Adverse reactions leading to SPRAVATO discontinuation in more than 1 patient were (in order of frequency): dissociation-related events (2.6%), blood pressure increased (0.9%), dizziness-related events (0.9%), nausea (0.9%), and sedation-related events (0.9%).

Most Common Adverse Reactions

The most commonly observed adverse reactions in patients treated with SPRAVATO plus oral AD (incidence ≥5% and at least twice that of placebo nasal spray plus oral AD) were dissociation, dizziness, sedation, blood pressure increased, hypoesthesia, vomiting, euphoric mood, and vertigo. Table 4 shows the incidence of adverse reactions that occurred in patients treated with SPRAVATO plus oral AD and greater than patients treated with placebo nasal spray plus oral AD.

Table 4: Adverse Reactions Occurring in ≥2% of Adult Patients with MDD and Acute Suicidal Ideation or Behavior Treated with SPRAVATO + Oral AD and at a Greater Rate than Patients Treated with Placebo Nasal Spray + Oral AD

	SPRAVATO + Oral AD (N=227)	Placebo + Oral AD (N=225)
Cardiac disorders		
Tachycardia*	8 (4%)	2 (1%)
Ear and labyrinth disorders		
Vertigo	14 (6%)	1 (0.4%)
Gastrointestinal disorders		
Nausea	61 (27%)	31 (14%)
Vomiting	26 (11%)	12 (5%)
Constipation	22 (10%)	14 (6%)
Dry mouth	8 (4%)	6 (3%)
Toothache	5 (2%)	2 (1%)
General disorders and administration site conditions		
Feeling drunk	8 (4%)	1 (0.4%)
Feeling of relaxation	5 (2%)	3 (1%)
Investigations		
Blood pressure increased*	34 (15%)	14 (6%)
Musculoskeletal and connective tissue disorders		
Myalgia	5 (2%)	1 (0.4%)
Nervous system disorders		
Dizziness*	103 (45%)	34 (15%)
Sedation*	66 (29%)	27 (12%)
Dysgeusia*	46 (20%)	29 (13%)
Hypoesthesia*	30 (13%)	4 (2%)
Lethargy*	10 (4%)	4 (2%)
Confusional state	5 (2%)	0 (0%)
Psychiatric disorders		
Dissociation*	108 (48%)	30 (13%)
Anxiety*	34 (15%)	20 (9%)
Euphoric mood	17 (7%)	1 (0.4%)
Intentional self-injury	7 (3%)	3 (1%)
Dysphoria	5 (2%)	0 (0%)
Renal and urinary disorders		
Pollakiuria*	5 (2%)	2 (1%)

Table 4: Adverse Reactions Occurring in ≥2% of Adult Patients with MDD and Acute Suicidal Ideation or Behavior Treated with SPRAVATO + Oral AD and at a Greater Rate than Patients Treated with Placebo Nasal Spray + Oral AD (continued)

	SPRAVATO + Oral AD (N=227)	Placebo + Oral AD (N=225)
Respiratory, thoracic and mediastinal disorders		
Oropharyngeal pain	10 (4%)	3 (1%)
Throat irritation	9 (4%)	5 (2%)
Skin and subcutaneous tissue disorders		
Hyperhidrosis*	11 (5%)	5 (2%)

* The following terms were combined:

Anxiety includes: agitation; anxiety; anxiety disorder; fear; irritability; nervousness; panic attack; psychomotor hyperactivity; tension
Blood pressure increased includes: blood pressure diastolic increased; blood pressure increased; blood pressure systolic increased; hypertension
Dissociation includes: depersonalization/derealization disorder; derealization; diplopia; dissociation; dysesthesia; feeling cold; feeling hot; hallucination; hallucination, auditory; hallucination, visual; hallucinations, mixed; hyperacusis; paresthesia; paresthesia oral; pharyngeal paresthesia; photophobia; time perception altered; tinnitus; vision blurred
Dizziness includes: dizziness; dizziness exertional; dizziness postural
Dysgeusia includes: dysgeusia; hypogeusia
Hyperhidrosis includes: cold sweat; hyperhidrosis
Hypoesthesia includes: hypoesthesia; hypoesthesia oral; intranasal hypoesthesia; pharyngeal hypoesthesia
Lethargy includes: fatigue; lethargy; psychomotor retardation
Pollakiuria includes: micturition urgency; pollakiuria
Sedation includes: sedation; somnolence; stupor
Tachycardia includes: heart rate increased; sinus tachycardia; tachycardia

Sedation

Sedation was evaluated by adverse event reports and the Modified Observer's Assessment of Alertness/Sedation (MOAA/S). In the MOAA/S, 5 means "responds readily to name spoken in normal tone" and 0 means "no response after painful trapezius squeeze." Any decrease in MOAA/S from pre-dose is considered to indicate the presence of sedation, and such a decrease occurred in a higher number of patients on SPRAVATO than placebo during the short-term TRD studies. Dose-related increases in the incidence of sedation (MOAA/S score <5) were observed in a fixed-dose TRD study [see *Warnings and Precautions (5.1)*]. Table 5 presents the incidence of sedation (MOAA/S score <5) in a fixed-dose study with adult patients <65 years of age with TRD and a flexible-dose study with patients ≥65 years of age with TRD.

Table 5: Incidence of Sedation (MOAA/S Score <5) in Double-Blind, Randomized, Placebo-Controlled Studies (Fixed-Dose Study with Adult Patients <65 Years of Age with TRD and Flexible-Dose Study with Patients ≥65 Years of Age with TRD)

	Patients <65 years		Patients ≥65 years	
	Placebo + Oral AD	SPRAVATO + Oral AD 56 mg 84 mg	Placebo + Oral AD	SPRAVATO + Oral AD 28 to 84 mg
Number of patients*	N=112	N=114	N=114	N=63
Sedation (MOAA/S score <5)	11%	50%	61%	49%

*Patients who were evaluated with MOAA/S

In studies for the treatment of depressive symptoms in adults with MDD with acute suicidal ideation or behavior, there was a higher incidence of sedation (MOAA/S score <5) in patients treated with SPRAVATO plus oral AD compared to patients treated with placebo plus oral AD, similar to the TRD study results in Table 5.

Dissociation/Perceptual Changes

SPRAVATO can cause dissociative symptoms (including derealization and depersonalization) and perceptual changes (including distortion of time and space, and illusions). In clinical trials, dissociation was transient and occurred on the day of dosing. Dissociation was evaluated by adverse event reports and the Clinician-Administered Dissociative States Scale (CADSS). A CADSS total score of more than 4 indicates the presence of dissociative symptoms, and such an increase to a score of 4 or more occurred in a higher number of patients on SPRAVATO compared to placebo during the short-term TRD studies. Dose-related increases in the incidence of dissociative symptoms (CADSS total score >4 and change >0) were observed in a fixed-dose TRD study [see *Warnings and Precautions (5.2)*]. Table 6 presents the incidence of dissociation (CADSS total score >4 and change >0) in a fixed-dose study with adult patients <65 years of age with TRD and a flexible-dose study with patients ≥65 years of age with TRD.

Table 6: Incidence of Dissociation (CADSS Total Score >4 and Change >0) in Double-Blind, Randomized, Placebo-Controlled Studies (Fixed-Dose Study with Adult Patients <65 Years of Age with TRD and Flexible-Dose Study with Patients ≥65 Years of Age with TRD)

	Patients <65 years			Patients ≥65 years	
	Placebo + Oral AD	SPRAVATO + Oral AD		Placebo + Oral AD	SPRAVATO + Oral AD 28 to 84 mg
		56 mg	84 mg		
Number of patients*	N=113	N=113	N=116	N=65	N=72
CADSS total score >4 and change >0	5%	61%	69%	12%	75%

* Number of patients who were evaluated with CADSS

In studies for the treatment of depressive symptoms in adults with MDD with acute suicidal ideation or behavior, patients treated with SPRAVATO plus oral AD also demonstrated a higher number (84%) with dissociation (CADSS total score >4 and change >0) compared to patients treated with placebo plus oral AD (16%).

Increase in Blood Pressure

The mean placebo-adjusted increases in systolic and diastolic blood pressure (SBP and DBP) over time were about 7 to 9 mmHg in SBP and 4 to 6 mmHg in DBP at 40 minutes post-dose and 2 to 5 mmHg in SBP and 1 to 3 mmHg in DBP at 1.5 hours post-dose in patients with TRD receiving SPRAVATO plus oral antidepressants [see Warnings and Precautions (5.6)]. Table 7 presents increases in blood pressure in short-term trials with patients <65 years of age and ≥65 years of age with TRD.

Table 7: Increases in Blood Pressure in Double-blind, Randomized, Placebo-Controlled, Short-Term Trials of SPRAVATO + Oral AD Compared to Placebo Nasal Spray + Oral AD in the Treatment of TRD in Adult Patients

	Patients <65 years		Patients ≥65 years	
	SPRAVATO + Oral AD N=346	Placebo + Oral AD N=222	SPRAVATO + Oral AD N=72	Placebo + Oral AD N=65
Systolic blood pressure				
≥180 mmHg	9 (3%)	---	2 (3%)	1 (2%)
≥40 mmHg increase	29 (8%)	1 (0.5%)	12 (17%)	1 (2%)
Diastolic blood pressure				
≥110 mmHg	13 (4%)	1 (0.5%)	---	---
≥25 mmHg increase	46 (13%)	6 (3%)	10 (14%)	2 (3%)

In studies for the treatment of depressive symptoms in adults with MDD with acute suicidal ideation or behavior, patients treated with SPRAVATO plus oral antidepressants demonstrated similar mean placebo-adjusted increases in SBP and DBP compared to patient with TRD, as well as similar rates of increases to SBP ≥180 mmHg or ≥40 mmHg increases in SBP, and similar rates of increases to DBP ≥110 mmHg or ≥25 mmHg increases in DBP, compared to the TRD study results in Table 7.

Nausea and Vomiting

SPRAVATO can cause nausea and vomiting. Most of these events occurred on the day of dosing and resolved the same day, with the median duration not exceeding 1 hour in most subjects across dosing sessions. Rates of reported nausea and vomiting decreased over time across dosing sessions from the first week of treatment in the short-term studies, as well as over time with long-term treatment. Table 8 presents the incidence and severity of nausea and vomiting in a short-term study with patients with TRD.

Table 8: Incidence and Severity of Nausea and Vomiting in a Double-blind, Randomized, Placebo-Controlled, Fixed-Dose Study in Adult Patients with TRD

Treatment (+ Oral AD)	N	Nausea		Vomiting	
		All	Severe	All	Severe
SPRAVATO 56 mg	115	31 (27%)	0	7 (6%)	0
SPRAVATO 84 mg	116	37 (32%)	4 (3%)	14 (12%)	3 (3%)
Placebo Nasal Spray	113	12 (11%)	0	2 (2%)	0

In studies for the treatment of depressive symptoms in adults with MDD with acute suicidal ideation or behavior, patients demonstrated similar incidence and severity of reported nausea and vomiting compared to the TRD study results described above.

Sense of Smell

Sense of smell was assessed over time; no difference was observed between patients treated with SPRAVATO plus oral AD and those treated with placebo nasal spray plus oral AD during the double-blind maintenance phase of Study 2 [see Clinical Studies (14.1)].

7 DRUG INTERACTIONS

7.1 Central Nervous System Depressants

Concomitant use with CNS depressants (e.g., benzodiazepines, opioids, alcohol) may increase sedation [see Warnings and Precautions (5.1)]. Closely monitor for sedation with concomitant use of SPRAVATO with CNS depressants.

7.2 Psychostimulants

Concomitant use with psychostimulants (e.g., amphetamines, methylphenidate, modafinil, armodafinil) may increase blood pressure [see Warnings and Precautions (5.6)]. Closely monitor blood pressure with concomitant use of SPRAVATO with psychostimulants.

7.3 Monoamine Oxidase Inhibitors (MAOIs)

Concomitant use with monoamine oxidase inhibitors (MAOIs) may increase blood pressure [see Warnings and Precautions (5.6)]. Closely monitor blood pressure with concomitant use of SPRAVATO with MAOIs.

8 USE IN SPECIFIC POPULATIONS

8.1 Pregnancy

Pregnancy Exposure Registry

There is a pregnancy exposure registry that monitors pregnancy outcomes in women exposed to antidepressants, including SPRAVATO, during pregnancy. Healthcare providers are encouraged to register patients by contacting the National Pregnancy Registry for Antidepressants at 1-844-405-6185 or online at <https://womensmentalhealth.org/clinical-and-research-programs/pregnancyregistry/antidepressants/>.

Risk Summary

SPRAVATO is not recommended during pregnancy. There are insufficient data on SPRAVATO use in pregnant women to draw conclusions about any drug-associated risk of major birth defects, miscarriage, or adverse maternal or fetal outcomes. Based on published findings from pregnant animals treated with ketamine, the racemic mixture of arketamine and esketamine, SPRAVATO may cause fetal harm when administered to pregnant women (see Data). Advise pregnant women of the potential risk to an infant exposed to SPRAVATO in utero. There are risks to the mother associated with untreated depression in pregnancy (see Clinical Considerations). If a woman becomes pregnant while being treated with SPRAVATO, treatment with esketamine should be discontinued and the patient should be counseled about the potential risk to the fetus.

Published studies in pregnant primates demonstrate that the administration of drugs that block N-methyl-D-aspartate (NMDA) receptors during the period of peak brain development increases neuronal apoptosis in the developing brain of the offspring. There are no data on pregnancy exposures in primates corresponding to periods prior to the third trimester in humans [see Use in Specific Populations (8.2)].

In an embryo-fetal reproduction study in rabbits, skeletal malformations were noted at maternally toxic doses when ketamine was intranasally administered with a No Observed Adverse Effect Level (NOAEL) at estimated esketamine exposures 0.3 times the exposures at the maximum recommended human dose (MRHD) of 84 mg/day. In addition, intranasal administration of esketamine to pregnant rats during pregnancy and lactation at exposures that were similar to those at the MRHD resulted in a delay in sensorimotor development in pups during the preweaning period and a decrease in motor activity in the post-weaning period.

The estimated background risk of major birth defects and miscarriage for the indicated population is unknown. All pregnancies have a background risk of birth defect, loss, or other adverse outcomes. In the U.S. general population, the estimated background risk of major birth defects and miscarriage in clinically recognized pregnancies is 2 to 4% and 15 to 20%, respectively.

Clinical Considerations

Disease-Associated Maternal and/or Embryo-Fetal Risk

A prospective, longitudinal study followed 201 pregnant women with a history of major depressive disorder who were euthymic and taking antidepressants at the beginning of pregnancy. The women who discontinued antidepressants during pregnancy were more likely to experience a relapse of major depression than women who continued antidepressants. Consider the risk of untreated depression when discontinuing or changing treatment with antidepressant medication during pregnancy and postpartum.

Data

Animal Data

Based on published data, when female monkeys were treated intravenously with racemic ketamine at anesthetic dose levels in the third trimester of pregnancy, neuronal cell death was observed in the brains of their fetuses. This period of brain development translates into the third trimester of human pregnancy. The clinical significance of these findings is not clear; however, studies in juvenile animals suggest neuroapoptosis correlates with long-term cognitive deficits.

Racemic ketamine was administered intranasally to pregnant rats during the period of organogenesis at doses of 15, 50, and 150 mg/kg/day. The No Observed Adverse Effect Level (NOAEL) for embryo-fetal toxicity in rats was the highest dose of 150 mg/kg/day. Estimating 50% of the exposure to be from esketamine, the NOAEL associated with esketamine plasma exposure (AUC) is 12-times the AUC exposure at the MRHD of 84 mg/day. In pregnant rabbits, racemic ketamine was administered intranasally from gestational day 6 to 18 at doses of 10, 30, and

100 mg/kg/day. The high dose was lowered from 100 to 50 mg/kg after 5 days of dosing due to excessive mortality in the pregnant rabbits. Skeletal malformations were observed at doses \geq 30mg/kg/day, which were maternally toxic. The NOAEL for skeletal malformations was associated with a plasma esketamine exposure (AUC) that was 0.3 times the AUC exposure at MRHD of 84 mg/day.

Administration of esketamine to pregnant rats during pregnancy and lactation at intranasal doses equivalent to 4.5, 15, and 45 mg/kg/day (based on a 200-gram rat) produced AUC exposures 0.07, 0.5, and 0.7 times the MRHD of 84 mg/day, respectively. Maternal toxicity was observed at doses \geq 15 mg/kg/day. In addition, a dose-dependent delay in the age of attainment of Preyer response reflex was observed in pups at all doses during the preweaning period. This sensory/motor developmental measure was tested starting on postnatal day (PND) 9, and the effect normalized by PND 19 in treatment groups as compared with PND 14 for the majority of the control animals. There is no NOAEL for this delay in sensory/motor response observed in pups during the preweaning period. During the postweaning period, a decrease in motor activity was observed at doses \geq 15 mg/kg which is 0.5-times the human exposure at the MRHD of 84 mg/day. The NOAEL for maternal toxicity and decreased motor activity during the postweaning period was 4.5 mg/kg/day which was associated with a plasma exposure (AUC) that was 0.07-times the AUC exposure at MRHD of 84 mg/day.

8.2 Lactation

Risk Summary

Esketamine is present in human milk. There are no data on the effects of SPRAVATO on the breastfed infant or on milk production. Published studies in juvenile animals report neurotoxicity (*see Data*). Because of the potential for neurotoxicity, advise patients that breast-feeding is not recommended during treatment with SPRAVATO.

Data

Published juvenile animal studies demonstrate that the administration of drugs that block NMDA receptors, such as ketamine, during the period of rapid brain growth or synaptogenesis, results in widespread neuronal and oligodendrocyte cell loss in the developing brain and alterations in synaptic morphology and neurogenesis. Based on comparisons across species, the window of vulnerability to these changes is believed to correlate with exposures in the third trimester of gestation through the first several months of life, but this window may extend out to approximately 3 years of age in humans.

8.3 Females and Males of Reproductive Potential

Contraception

Based on published animal reproduction studies, SPRAVATO may cause embryo-fetal harm when administered to a pregnant woman [*see Warnings and Precautions (5.10) and Use in Specific Populations (8.1)*]. However, it is not clear how these animal findings relate to females of reproductive potential treated with the recommended clinical dose. Consider pregnancy planning and prevention for females of reproductive potential during treatment with SPRAVATO.

8.4 Pediatric Use

The safety and effectiveness of SPRAVATO in pediatric patients have not been established. Clinical studies of SPRAVATO in pediatric patients have not been conducted.

8.5 Geriatric Use

Of the total number of patients in Phase 3 clinical studies exposed to SPRAVATO, (N=1601), 194 (12%) were 65 years of age and older, and 25 (2%) were 75 years of age and older. No overall differences in the safety profile were observed between patients 65 years of age and older and patients younger than 65 years of age.

The mean esketamine C_{max} and AUC values were higher in elderly patients compared with younger adult patients [*see Clinical Pharmacology (12.3)*].

The efficacy of SPRAVATO for the treatment of TRD in geriatric patients was evaluated in a 4-week, randomized, double-blind study comparing flexibly-dosed intranasal SPRAVATO plus a newly initiated oral antidepressant compared to intranasal placebo plus a newly initiated oral antidepressant in patients \geq 65 years of age. SPRAVATO was initiated at 28 mg twice weekly and could be titrated to 56 mg or 84 mg administered twice-weekly. At the end of four weeks, there was no statistically significant difference between groups on the primary efficacy endpoint of change from baseline to Week 4 on the Montgomery-Åsberg Depression Rating Scale (MADRS).

8.6 Hepatic Impairment

The mean esketamine AUC and $t_{1/2}$ values were higher in patients with moderate hepatic impairment compared to those with normal hepatic function [*see Clinical Pharmacology (12.3)*]. SPRAVATO-treated patients with moderate hepatic impairment may need to be monitored for adverse reactions for a longer period of time.

SPRAVATO has not been studied in patients with severe hepatic impairment (Child-Pugh class C). Use in this population is not recommended [*see Clinical Pharmacology (12.3)*].

9 DRUG ABUSE AND DEPENDENCE

9.1 Controlled Substance

SPRAVATO contains esketamine hydrochloride, the (S)-enantiomer of ketamine and a Schedule III controlled substance under the Controlled Substances Act.

9.2 Abuse

Individuals with a history of drug abuse or dependence may be at greater risk for abuse and misuse of SPRAVATO. Abuse is the intentional, non-therapeutic use of a drug, even once, for its psychological or physiological effects. Misuse is the intentional use, for therapeutic purposes, of a drug by an individual in a way other than prescribed by a healthcare provider or for whom it was not prescribed. Careful consideration is advised prior to use of individuals with a history of substance use disorder, including alcohol.

SPRAVATO may produce a variety of symptoms including anxiety, dysphoria, disorientation, insomnia, flashback, hallucinations, and feelings of floating, detachment and to be "spaced out". Monitoring for signs of abuse and misuse is recommended.

Abuse Potential Study

A cross-over, double-blind abuse potential study of SPRAVATO and ketamine was conducted in recreational polydrug users (n=34) who had experience with perception-altering drugs, including ketamine. Ketamine, the racemic mixture of arketamine and esketamine, is a Schedule III controlled substance and has known abuse potential. In this study, the mean "Drug Liking at the Moment" and "Take Drug Again" scores for single doses of intranasal SPRAVATO (84 mg and 112 mg – the maximum recommended dose and 1.3 times the maximum recommended dose, respectively) were similar to these scores in the intravenous ketamine (0.5 mg/kg infused over 40 minutes) control group. However, these scores were greater in the SPRAVATO and ketamine groups compared to the placebo group. The 112 mg dose of intranasal SPRAVATO was associated with significantly higher scores for "Hallucinating," "Floating," "Detached," and "Spaced Out" than the 84 mg dose of intranasal SPRAVATO and the intravenous ketamine dose.

9.3 Dependence

Physical dependence has been reported with prolonged use of ketamine. Physical dependence is a state that develops as a result of physiological adaptation in response to repeated drug use, manifested by withdrawal signs and symptoms after abrupt discontinuation or significant dosage reduction of a drug. There were no withdrawal symptoms captured up to 4 weeks after cessation of esketamine treatment. Withdrawal symptoms have been reported after the discontinuation of frequently used (more than weekly) large doses of ketamine for long periods of time. Such withdrawal symptoms are likely to occur if esketamine were similarly abused. Reported symptoms of withdrawal associated with daily intake of large doses of ketamine include craving, fatigue, poor appetite, and anxiety. Therefore, monitor SPRAVATO-treated patients for symptoms and signs of physical dependence upon the discontinuation of the drug.

Tolerance has been reported with prolonged use of ketamine. Tolerance is a physiological state characterized by a reduced response to a drug after repeated administration (i.e., a higher dose of a drug is required to produce the same effect that was once obtained at a lower dose). Similar tolerance would be expected with prolonged use of esketamine.

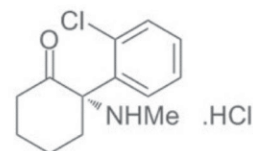
10 OVERDOSAGE

Management of Overdosage

There is no specific antidote for esketamine overdose. In the case of overdose, the possibility of multiple drug involvement should be considered. Contact a Certified Poison Control Center for the most up to date information on the management of overdose (1-800-222-1222 or www.poisson.org).

11 DESCRIPTION

SPRAVATO® contains esketamine hydrochloride, a non-competitive N-methyl-D-aspartate (NMDA) receptor antagonist. Esketamine is the S-enantiomer of racemic ketamine. The chemical name is (S)-2-(o-chlorophenyl)-2-(methylamino) cyclohexanone hydrochloride. Its molecular formula is $C_{13}H_{16}ClNO.HCl$ and its molecular weight is 274.2. The structural formula is:



Esketamine hydrochloride is a white or almost white crystalline powder that is freely soluble in water and in methanol, and soluble in ethanol.

SPRAVATO nasal spray is intended for nasal administration. Esketamine hydrochloride is contained as a solution in a stoppered glass vial within the nasal spray device. Each device delivers two sprays with a total of 32.3 mg of esketamine hydrochloride (equivalent to 28 mg of esketamine) in 0.2 mL of a clear, colorless aqueous solution with a pH of 4.5.

The inactive ingredients are citric acid monohydrate, edetate disodium, sodium hydroxide, and water for injection.

12 CLINICAL PHARMACOLOGY

12.1 Mechanism of Action

Esketamine, the S-enantiomer of racemic ketamine, is a non-selective, non-competitive antagonist of the N-methyl-D-aspartate (NMDA) receptor, an ionotropic glutamate receptor. The mechanism by which esketamine exerts its antidepressant effect is unknown. The major circulating metabolite of esketamine (noresketamine) demonstrated activity at the same receptor with less affinity.

12.2 Pharmacodynamics

Cardiac Electrophysiology

The effect of SPRAVATO (84 mg nasal spray and 0.8 mg/kg esketamine intravenously infused over 40 minutes) on the QTc interval was evaluated in a randomized, double-blind, placebo-, and positive-controlled (moxifloxacin 400 mg), 4-period, crossover study in 60 healthy subjects. A large increase in heart rate (i.e., >10 bpm) was observed in both intranasal and intravenous esketamine treatment groups. The totality of evidence from the nonclinical and clinical data indicates a lack of clinically relevant QTc prolongation at the therapeutic dose of esketamine.

12.3 Pharmacokinetics

Esketamine exposure increases with dose from 28 mg to 84 mg. The increase in C_{max} and AUC values was less than dose-proportional between 28 mg and 56 mg or 84 mg, but it was nearly dose proportional between 56 mg and 84 mg. No accumulation of esketamine in plasma was observed following twice a week administration.

Absorption

The mean absolute bioavailability is approximately 48% following nasal spray administration.

The time to reach maximum esketamine plasma concentration is 20 to 40 minutes after the last nasal spray of a treatment session.

The inter-subject variability of esketamine ranges from 27% to 66% for C_{max} and 18% to 45% for AUC_∞. The intra-subject variability of esketamine is approximately 15% for C_{max} and 10% for AUC_∞.

Distribution

The mean steady-state volume of distribution of esketamine administered by the intravenous route is 709 L.

Protein binding of esketamine was approximately 43% to 45%.

The brain-to-plasma ratio of noresketamine is 4- to 6-times lower than that of esketamine.

Elimination

After C_{max} was reached following intranasal administration, the decline in plasma esketamine concentrations was biphasic, with rapid decline for the initial 2 to 4 hours and a mean terminal half-life (t_{1/2}) that ranged from 7 to 12 hours. The mean clearance of esketamine is approximately 89 L/hour following intravenous administration. The elimination of the major metabolite, noresketamine, from plasma is slower than esketamine. The decline of noresketamine plasma concentrations is biphasic, with rapid decline for the initial 4 hours and a mean terminal t_{1/2} of approximately 8 hours.

Metabolism

Esketamine is primarily metabolized to noresketamine metabolite via cytochrome P450 (CYP) enzymes CYP2B6 and CYP3A4 and to a lesser extent CYP2C9 and CYP2C19. Noresketamine is metabolized via CYP-dependent pathways and certain subsequent metabolites undergo glucuronidation.

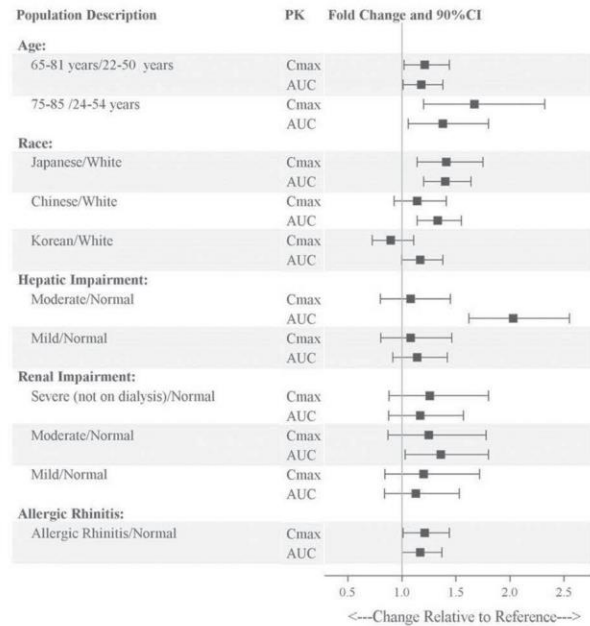
Excretion

Less than 1% of a dose of nasal esketamine is excreted as unchanged drug in urine. Following intravenous or oral administration, esketamine-derived metabolites were primarily recovered in urine (≥ 78% of a radiolabeled dose) and to a lesser extent in feces (≤ 2% of a radiolabeled dose).

Specific Populations

Exposures of esketamine in specific populations are summarized in Figure 1. No significant differences in the pharmacokinetics of SPRAVATO nasal spray were observed for sex and total body weight (>39 to 170 kg) based on population PK analysis. There is no clinical experience with SPRAVATO nasal spray in patients on renal dialysis or with severe (Child-Pugh class C) hepatic impairment.

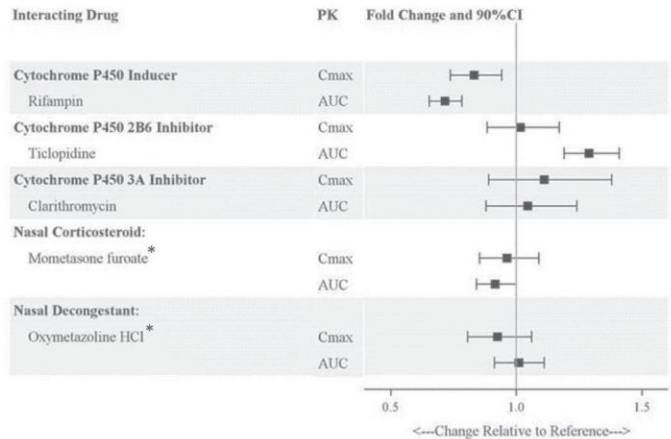
Figure 1: Effect of Specific Populations on the Pharmacokinetics of Esketamine



Drug Interaction Studies

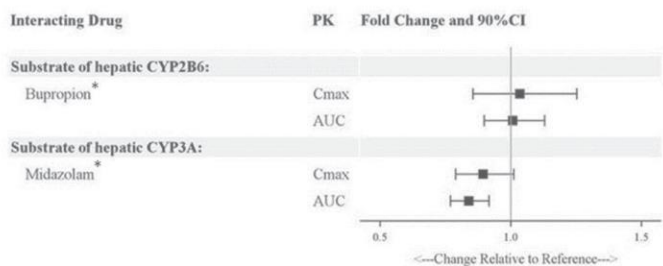
The effect of other drugs on the exposures of intranasally administered esketamine are summarized in Figure 2. The effect of SPRAVATO on the exposures of other drugs are summarized in Figure 3. Based on these results, none of the drug-drug interactions are clinically significant.

Figure 2: Effect of Co-administered Drugs on the Pharmacokinetics of Esketamine



*Administered 1 hour before intranasal esketamine

Figure 3: Effect of Esketamine on the Pharmacokinetics of Co-Administered Drugs



* The potential for cytochrome P450 induction by esketamine was assessed. Intranasal esketamine (84 mg) was administered twice weekly for 2 weeks. Bupropion or midazolam was administered at baseline and 24 hours after the last dose of esketamine.

In Vitro Studies

Enzyme Systems: Esketamine has modest induction effects on CYP2B6 and CYP3A4 in human hepatocytes. Esketamine and its major metabolites do not induce CYP1A2. Esketamine and its major circulating metabolites did not show inhibition potential against CYPs and UGTs, except for a weak reversible inhibition of noresketamine on CYP3A4.

Transporter Systems: Esketamine is not a substrate of transporters P-glycoprotein (P-gp; multidrug resistance protein 1), breast cancer resistance protein (BCRP), or organic anion transporter (OATP) 1B1, or OATP1B3. Esketamine and its major circulating metabolites do not inhibit these transporters or multi-drug and toxin extrusion 1 (MATE1) and MATE2-K, or organic cation transporter 2 (OCT2), OAT1, or OAT3.

13 NONCLINICAL TOXICOLOGY**13.1 Carcinogenesis, Mutagenesis, Impairment of Fertility****Carcinogenesis**

Once-daily intranasal administration of esketamine at doses equivalent to 4.5, 15, and 45 mg/kg/day (based on a 200-gram rat) did not increase the incidence of tumors in a 2-year rat carcinogenicity study. At the highest dose, the AUC exposure to esketamine was lower than the human exposure (AUC) at the maximum recommended human dose (MRHD) of 84 mg. Once-daily subcutaneous administration of esketamine up to 75 mg/kg/day (reduced to 40 mg/kg/day during week 17) did not increase the incidence of tumors in a 6-month study in transgenic (Tg.rasH2) mice.

Mutagenesis

Esketamine was not mutagenic with or without metabolic activation in the Ames test. Genotoxic effects with esketamine were seen in a screening *in vitro* micronucleus test in the presence of metabolic activation. However, intravenously-administered esketamine was devoid of genotoxic properties in an *in vivo* bone marrow micronucleus test in rats and an *in vivo* Comet assay in rat liver cells.

Impairment of Fertility

Esketamine was administered intranasally to both male and female rats before mating, throughout the mating period, and up to day 7 of gestation at doses equivalent to 4.5, 15, and 45 mg/kg/day (based on a 200-gram rat), which are approximately 0.05, 0.3, and 0.6-times the maximum recommended human dose (MRHD) of 84 mg/day based on mean AUC exposures, respectively. Estrous cycle irregularities were observed at the high dose of 45 mg/kg/day and increased time to mate was observed at doses \geq 15 mg/kg/day without an overall effect on mating or fertility indices. The No Observed Adverse Effect Level (NOAEL) for mating and fertility is 45 mg/kg/day which is 0.6 times the esketamine exposures at MRHD of 84 mg/day.

13.2 Animal Toxicology and/or Pharmacology**Neurotoxicity**

In a single-dose neuronal toxicity study where esketamine was administered intranasally to adult female rats, there were no findings of neuronal vacuolation in the brain up to an estimated dose equivalent of 45 mg/kg for a 200-gram rat with a safety margin of 1.8 and 4.5 times the clinical exposures for AUC and C_{max} , respectively, to the MRHD of 84 mg/day. In a second single-dose neurotoxicity study conducted with intranasally administered esketamine to adult female rats, there were no findings of neuronal necrosis up to a dose equivalent of 270 mg/kg for a 200-gram rat which has a safety margin of 18-fold and 23-fold, respectively, to AUC and C_{max} exposures at the MRHD of 84 mg/day. Neuronal vacuolation was not examined in this study.

In a single-dose neuronal toxicity study in adult rats, subcutaneously administered racemic ketamine caused neuronal vacuolation in layer I of the retrosplenial cortex of the brain without neuronal necrosis at a dose of 60 mg/kg. The NOAEL for vacuolation in this study was 15 mg/kg. Estimating 50% of the exposure to be from esketamine, the NOAEL for neuronal vacuolation is 1.6-times and 4.5-times and the NOAEL for neuronal necrosis is 10-times and 16-times exposures, respectively, for AUC and C_{max} to the clinical exposure at the MRHD of 84 mg/day. The relevance of these findings to humans is unknown.

14 CLINICAL STUDIES**14.1 Treatment-Resistant Depression****Short-Term Study**

SPRAVATO was evaluated in a randomized, placebo-controlled, double-blind, multicenter, short-term (4-week), Phase 3 study (Study 1; NCT02418585) in adult patients 18 to <65 years old with treatment-resistant depression (TRD). Patients in Study 1 met DSM-5 criteria for major depressive disorder (MDD) and in the current depressive episode, had not responded adequately to at least two different antidepressants of adequate dose and duration. After discontinuing prior antidepressant treatments, patients in Study 1 were randomized to receive twice weekly doses of intranasal SPRAVATO (flexible dose; 56 mg or 84 mg) or intranasal placebo. All patients also received open-label concomitant treatment with a newly initiated daily oral antidepressant (AD) (duloxetine, escitalopram, sertraline, or extended-release venlafaxine as determined by the investigator based on patient's

prior treatment history). SPRAVATO could be titrated up to 84 mg starting with the second dose based on investigator discretion.

The demographic and baseline disease characteristics of patients in Study 1 were similar for the SPRAVATO and placebo nasal spray groups. Patients had a median age of 47 years (range 19 to 64 years) and were 62% female, 93% Caucasian, and 5% Black. The newly initiated oral AD was an SSRI in 32% of patients and an SNRI in 68% of patients.

In Study 1, the primary efficacy measure was change from baseline in the Montgomery-Åsberg Depression Rating Scale (MADRS) total score at the end of the 4-week double-blind induction phase. The MADRS is a ten-item, clinician-rated scale used to assess severity of depressive symptoms. Scores on the MADRS range from 0 to 60, with higher scores indicating more severe depression. SPRAVATO plus a newly initiated oral AD demonstrated statistical superiority on the primary efficacy measure compared to placebo nasal spray plus a newly initiated oral AD (see Table 9).

Table 9: Primary Efficacy Results for Change from Baseline in MADRS Total Score at Week 4 in Patients with TRD in Study 1

Treatment Group	Number of Patients	Mean Baseline Score (SD)	LS Mean (SE) Change from Baseline to end of Week 4	LS Mean Difference (95% CI)*
SPRAVATO (56 mg or 84 mg) + Oral AD†	114	37.0 (5.7)	-19.8 (1.3)	-4.0 (-7.3; -0.6)
Placebo nasal spray + Oral AD	109	37.3 (5.7)	-15.8 (1.3)	-

SD=standard deviation; SE=standard error; LS Mean=least-squares mean; CI=confidence interval; AD=antidepressant

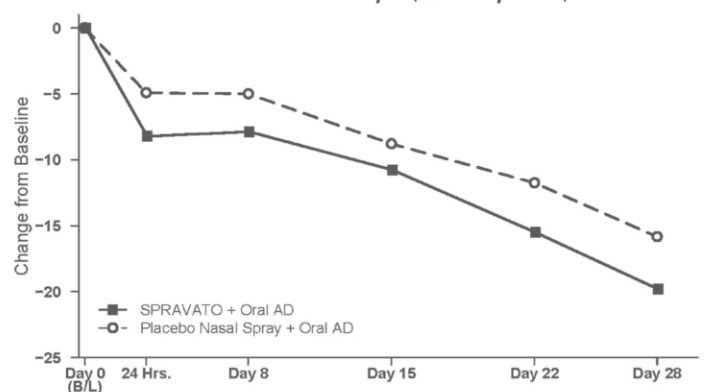
* Difference (SPRAVATO + Oral AD minus Placebo nasal spray + Oral AD) in least-squares mean change from baseline

† SPRAVATO + Oral AD was statistically significantly superior to placebo nasal spray + oral AD

Time Course of Treatment Response

Figure 4 shows the time course of response for the primary efficacy measure (MADRS) in Study 1. Most of SPRAVATO's treatment difference compared to placebo was observed at 24 hours. Between 24 hours and Day 28, both the SPRAVATO and placebo groups continued to improve; the difference between the groups generally remained but did not appear to increase over time through Day 28. At Day 28, 67% of the patients randomized to SPRAVATO were receiving 84 mg twice weekly.

Figure 4: Least Squares Mean Change from Baseline in MADRS Total Score Over Time in Patients with TRD in Study 1* (Full Analysis Set)



* Note: In this flexible-dose study, dosing was individualized based on efficacy and tolerability. Few subjects (<10%) had reduction in SPRAVATO dosage from 84 mg to 56 mg twice weekly.

Treatment-Resistant Depression – Long-term Study

Study 2 (NCT02493868) was a long-term randomized, double-blind, parallel-group, multicenter maintenance-of-effect study in adults 18 to <65 years of age who were known remitters and responders to SPRAVATO. Patients in this study were responders in one of two short-term controlled trials (Study 1 and another 4-week study) or in an open-label direct-enrollment study in which they received flexibly-dosed SPRAVATO (56 mg or 84 mg twice weekly) plus daily oral AD in an initial 4-week phase.

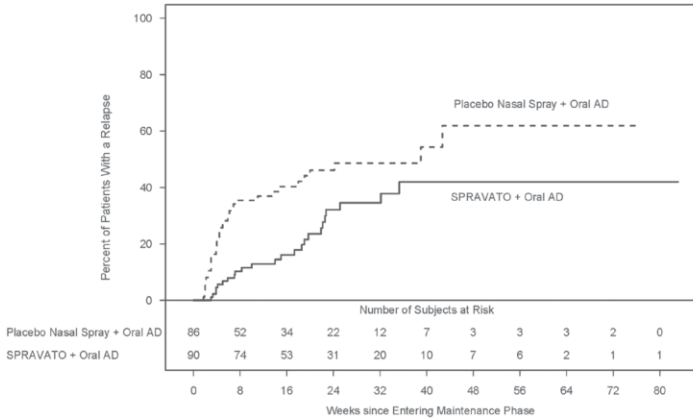
Stable remission was defined as a MADRS total score \leq 12 for at least 3 of the last 4 weeks. Stable response was defined as a MADRS total score reduction \geq 50% for the last 2 weeks of optimization and not in remission. After at least 16 initial weeks of treatment with SPRAVATO and an oral AD, stable remitters and stable responders were randomized separately to continue intranasal treatment with

SPRAVATO or switch to placebo nasal spray, in both cases with continuation of their oral AD. The primary study endpoint was time to relapse in the stable remitter group. Relapse was defined as a MADRS total score ≥ 22 for 2 consecutive weeks or hospitalization for worsening depression or any other clinically relevant event indicative of relapse.

The demographic and baseline disease characteristics of the two groups were similar. Patients had a median age of 48 years (range 19 to 64 years) and were 66% female, 90% Caucasian, and 4% Black.

Patients in stable remission who continued treatment with SPRAVATO plus oral AD experienced a statistically significantly longer time to relapse of depressive symptoms than did patients on placebo nasal spray plus an oral AD (see Figure 5).

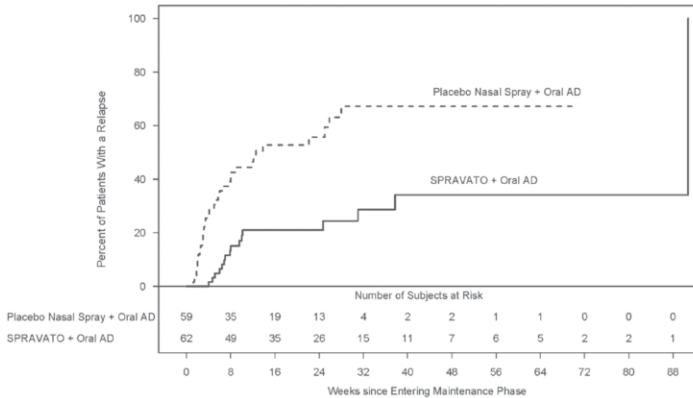
Figure 5: Time to Relapse in Patients with TRD in Stable Remission in Study 2* (Full Analysis Set)



* Note: The estimated hazard ratio (95% CI) of SPRAVATO + Oral AD relative to Placebo nasal spray + Oral AD based on weighted estimates was 0.49 (95% CI: 0.29, 0.84). However, the hazard ratio did not appear constant throughout the trial.

Time to relapse was also significantly delayed in the stable responder population. These patients experienced a statistically significantly longer time to relapse of depressive symptoms than patients on placebo nasal spray plus oral AD (see Figure 6).

Figure 6: Time to Relapse in Patients in Stable Response in Patients with TRD in Study 2* (Full Analysis Set)



* Note: The estimated hazard ratio (95% CI) of SPRAVATO + Oral AD relative to Placebo nasal spray + Oral AD based on Cox proportional hazards model was 0.30 (95% CI: 0.16, 0.55).

In Study 2, based on depressive symptomatology, the majority of stable remitters (69%) received every-other-week dosing for the majority of time during the maintenance phase; 23% of stable remitters received weekly dosing. Among stable responders, 34% received every-other-week dosing and 55% received weekly dosing the majority of time during the maintenance phase. Of the patients randomized to SPRAVATO, 39% received the 56 mg dose and 61% received the 84 mg dose.

14.2 Depressive Symptoms in Patients with Major Depressive Disorder with Acute Suicidal Ideation or Behavior

SPRAVATO was evaluated in two identical Phase 3 short-term (4-week) randomized, double-blind, multicenter, placebo-controlled studies, Study 3 (NCT03039192) and Study 4 (NCT03097133), in adults with moderate-to-severe MDD (MADRS total score >28) who had active suicidal ideation and intent. In these studies, patients received treatment with SPRAVATO 84 mg or placebo nasal spray twice-weekly for 4 weeks. After the first dose, a one-time dose reduction to SPRAVATO 56 mg was allowed for patients unable to tolerate the 84 mg dose. All patients received comprehensive standard of care treatment, including an initial inpatient psychiatric hospitalization and a newly initiated or optimized oral antidepressant (AD) (AD monotherapy or AD plus augmentation therapy) as determined by the investigator. After completion of the 4-week treatment period with SPRAVATO/placebo, study follow-up continued through Day 90.

The baseline demographic and disease characteristics of patients in Study 3 and Study 4 were similar between the SPRAVATO plus standard of care or placebo nasal spray plus standard of care treatment groups. The median patient age was 40 years (range 18 to 64 years), 61% were female; 73% Caucasian and 6% Black; and 63% of patients had at least one prior suicide attempt. Prior to entering the study, 92% of the patients were receiving antidepressant therapy. During the study, as part of standard of care treatment, 40% of patients received AD monotherapy, 54% of patients received AD plus augmentation therapy, and 6% received both AD monotherapy/AD plus augmentation therapy.

The primary efficacy measure was the change from baseline in the MADRS total score at 24 hours after first dose (Day 2). In Study 3 and Study 4, SPRAVATO plus standard of care demonstrated statistical superiority on the primary efficacy measure compared to placebo nasal spray plus standard of care (see Table 10).

Table 10: Primary Efficacy Results for Change from Baseline in MADRS Total Score at 24 Hours After First Dose (Studies 3 and 4)

Study No.	Treatment Group [§]	Number of Patients	Mean Baseline Score (SD)	LS Mean Change from Baseline to 24 hr Post First Dose (SE)	LS Mean Difference (95% CI) [†]
Study 3	SPRAVATO 84 mg + SOC [‡]	111	41.3 (5.87)	-15.9 (1.04)	-3.8 (-6.56; -1.09)
	Placebo nasal spray + SOC	112	41.0 (6.29)	-12.0 (1.02)	-
Study 4	SPRAVATO 84 mg + SOC [‡]	113	39.4 (5.21)	-16.0 (1.02)	-3.9 (-6.60; -1.11)
	Placebo nasal spray + SOC	113	39.9 (5.76)	-12.2 (1.05)	-

SD=standard deviation; SE=standard error; LS Mean=least-squares mean; CI=confidence interval; SOC=standard of care.

§ SOC treatment included an initial inpatient psychiatric hospitalization and a newly initiated or optimized oral antidepressant (antidepressant monotherapy or antidepressant monotherapy plus augmentation therapy).

† Difference (SPRAVATO + SOC minus placebo nasal spray + SOC) in least-squares mean change from baseline.

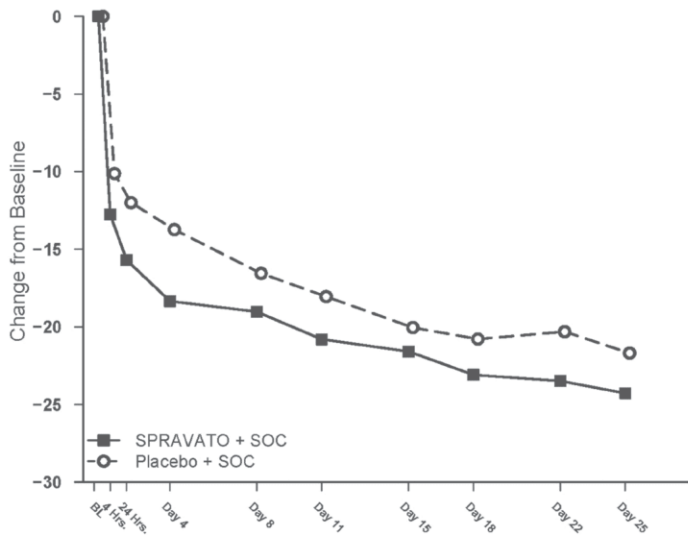
‡ SPRAVATO + SOC were statistically significantly superior to placebo nasal spray + SOC.

The secondary efficacy measure was the change in Clinical Global Impression of Suicidal Severity - Revised (CGI-SS-r) score at 24 hours after first dose (Day 2). The CGI-SS-r is a one-item, clinician-rated assessment used to rate the current severity of a patient's suicidal ideation and behavior. Scores on the CGI-SS-r range from 0 to 6, with higher scores indicating more severe suicidal ideation and behavior. In Study 3 and Study 4, SPRAVATO plus standard of care did not demonstrate superiority compared to placebo nasal spray plus standard of care in improving CGI-SS-r.

Time Course of Treatment Response

In both Study 3 and Study 4, SPRAVATO's treatment difference compared to placebo was observed starting at 4 hours. Between 4 hours and Day 25, both the SPRAVATO and placebo groups continued to improve; the difference between the groups generally remained but did not appear to increase over time through Day 25. Figure 7 depicts time course of the primary efficacy measure of change in MADRS total score from Study 3.

Figure 7: Least Squares Mean Change from Baseline in MADRS Total Score Over Time in Study 3 (Full Analysis Set)



* Note: In Study 3, after the first dose, a one-time dose reduction to SPRAVATO 56 mg was allowed for patients unable to tolerate the 84 mg dose. Approximately 19% of patients had reduction in SPRAVATO dosage from 84 mg to 56 mg twice weekly.

14.3 Special Safety Studies

Effects on Driving

Two studies were conducted to assess the effects of SPRAVATO on driving skills; one study in adult patients with major depressive disorder (Study 5) and one study in healthy subjects (Study 6). On-road driving performance was assessed by the mean standard deviation of the lateral position (SDLP), a measure of driving impairment.

A single-blind, placebo-controlled study in 25 adult patients with major depressive disorder evaluated the effects of a single 84 mg dose of intranasal SPRAVATO on next day driving and the effect of repeated administration of 84 mg of intranasal SPRAVATO on same-day driving performance (Study 5). For the single dose treatment phase, an ethanol-containing beverage was used as a positive control. The SDLP after administration of single 84 mg dose of SPRAVATO nasal spray was similar to placebo 18 hours post-dose. For the multiple dose treatment phase, the SDLP after repeated administration of 84 mg intranasal SPRAVATO was similar to placebo 6 hours post-dose on Day 11, Day 18, and Day 25.

A randomized, double-blind, cross-over, placebo-controlled study in 23 healthy subjects evaluated the effects of a single 84-mg dose of esketamine nasal spray on driving (Study 6). Mirtazapine (30 mg) was used as a positive control. Driving performance was assessed at 8 hours after SPRAVATO or mirtazapine administration. The SDLP 8 hours after SPRAVATO nasal spray administration was similar to placebo. Two subjects discontinued the driving test after receiving SPRAVATO because of a perceived inability to drive after experiencing post-dose adverse reactions; one subject reported pressure behind the eyes and paresthesia of the hands and feet, the other reported headache with light sensitivity and anxiety.

16 HOW SUPPLIED/STORAGE AND HANDLING

SPRAVATO® nasal spray is available as an aqueous solution of esketamine hydrochloride in a stoppered glass vial within a nasal spray device. Each nasal spray device delivers two sprays containing a total of 28 mg of esketamine (supplied as 32.3 mg of esketamine hydrochloride).

SPRAVATO is available in the following presentations:

- 56 mg Dose Kit: Unit-dose carton containing two 28 mg nasal spray devices (56 mg total dose) (NDC 50458-028-02).
- 84 mg Dose Kit: Unit-dose carton containing three 28 mg nasal spray devices (84 mg total dose) (NDC 50458-028-03).

Within each kit, each 28 mg device is individually packaged in a sealed blister (NDC 50458-028-00).

Storage

Store at 20° to 25°C (68° to 77°F); excursions permitted from 15° to 30°C (59° to 86°F) [see USP Controlled Room Temperature].

Disposal

SPRAVATO nasal spray devices must be handled with adequate security, accountability, and proper disposal, per facility procedure for a Schedule III drug product, and per applicable federal, state, and local regulations.

17 PATIENT COUNSELING INFORMATION

Advise the patient to read the FDA-approved patient labeling (Medication Guide).

Sedation and Dissociation

Inform patients that SPRAVATO has potential to cause sedation, dissociative symptoms, perception disturbances, dizziness, vertigo, and anxiety. Advise patients that they will need to be observed by a healthcare provider until these effects resolve [see Boxed Warning, Warnings and Precautions (5.1, 5.2)].

Potential for Abuse, Misuse, and Dependence

Advise patients that SPRAVATO is a federally controlled substance because it can be abused or lead to dependence [see Warnings and Precautions (5.3), Drug Abuse and Dependence (9)].

SPRAVATO Risk Evaluation and Mitigation Strategy (REMS)

SPRAVATO is available only through a restricted program called the SPRAVATO REMS [see Warnings and Precautions (5.4)]. Inform the patient of the following notable requirements:

- Patients treated in outpatient healthcare settings (e.g. medical offices and clinics) must be enrolled in the SPRAVATO REMS Program prior to administration.
- SPRAVATO must be administered under the direct observation of a healthcare provider.
- Patients must be monitored by a healthcare provider for at least 2 hours after administration of SPRAVATO.

Suicidal Thoughts and Behaviors

Advise patients and caregivers to look for the emergence of suicidality, especially early during treatment and when the dosage is adjusted [see Boxed Warning and Warnings and Precautions (5.5)].

Increases in Blood Pressure

Advise patients that SPRAVATO can cause increases in blood pressure. Inform patients that after treatment sessions they should be advised that they may need to be observed by a healthcare provider until these effects resolve [see Warnings and Precautions (5.6)].

Impaired Ability to Drive and Operate Machinery

Caution patients that SPRAVATO may impair their ability to drive or operate machinery. Instruct patients not to engage in potentially hazardous activities requiring complete mental alertness and motor coordination such as driving a motor vehicle or operating machinery until the next day after a restful sleep. Advise patients that they will need someone to drive them home after each treatment session [see Warnings and Precautions (5.8)].

Pregnancy

Advise pregnant women and women of reproductive potential of the potential risk to a fetus. Advise patients to notify their healthcare provider if they are pregnant or intend to become pregnant during treatment with SPRAVATO. Advise patients that there is a pregnancy exposure registry that monitors pregnancy outcomes in women exposed to SPRAVATO during pregnancy. [See Use in Specific Populations (8.1)].

Lactation

Advise women not to breastfeed during treatment with SPRAVATO [see Use in Specific Populations (8.2)].

Manufactured for:
Janssen Pharmaceuticals, Inc.
Titusville, NJ 08560

© 2019 Janssen Pharmaceutical Companies

MEDICATION GUIDE
SPRAVATO® (sprah vah' toe) CIII
(esketamine)
nasal spray

What is the most important information I should know about SPRAVATO?

SPRAVATO can cause serious side effects, including:

- **Sedation and dissociation.** SPRAVATO may cause sleepiness (sedation), fainting, dizziness, spinning sensation, anxiety, or feeling disconnected from yourself, your thoughts, feelings, space and time (dissociation).
 - Tell your healthcare provider right away if you feel like you cannot stay awake or if you feel like you are going to pass out.
 - Your healthcare provider must monitor you for serious side effects for at least 2 hours after taking SPRAVATO. Your healthcare provider will decide when you are ready to leave the healthcare setting.
- **Abuse and misuse.** There is a risk for abuse and physical and psychological dependence with SPRAVATO treatment. Your healthcare provider should check you for signs of abuse and dependence before and during treatment with SPRAVATO.
 - Tell your healthcare provider if you have ever abused or been dependent on alcohol, prescription medicines, or street drugs.
 - Your healthcare provider can tell you more about the differences between physical and psychological dependence and drug addiction.
- **SPRAVATO Risk Evaluation and Mitigation Strategy (REMS).** Because of the risks for sedation, dissociation, and abuse and misuse, SPRAVATO is only available through a restricted program called the SPRAVATO Risk Evaluation and Mitigation Strategy (REMS) Program. SPRAVATO can only be administered at healthcare settings certified in the SPRAVATO REMS Program. Patients treated in outpatient healthcare settings (e.g. medical offices and clinics) must be enrolled in the program.
- **Increased risk of suicidal thoughts and actions.** Antidepressant medicines may increase suicidal thoughts and actions in some people 24 years of age and younger, **especially within the first few months of treatment or when the dose is changed. SPRAVATO is not for use in children.**
 - Depression and other serious mental illnesses are the most important causes of suicidal thoughts and actions. Some people may have a higher risk of having suicidal thoughts and actions. These include people who have (or have a family history of) depression or a history of suicidal thoughts and actions.

How can I watch for and try to prevent suicidal thoughts and actions in myself or a family member?

- Pay close attention to any changes, especially sudden changes, in mood, behavior, thoughts, or feelings, or if you develop suicidal thoughts or actions.
- Tell your healthcare provider right away if you have any new or sudden changes in mood, behavior, thoughts, or feelings.
- Keep all follow-up visits with your healthcare provider as scheduled. Call your healthcare provider between visits as needed, especially if you have concerns about symptoms.

Tell your healthcare provider right away if you or your family member have any of the following symptoms, especially if they are new, worse, or worry you:

- | | |
|-----------------------------------|---|
| ◦ suicide attempts | ◦ worsening depression |
| ◦ thoughts about suicide or dying | ◦ other unusual changes in behavior or mood |

What is SPRAVATO?

SPRAVATO is a prescription medicine used along with an antidepressant taken by mouth to treat:

- adults with treatment-resistant depression (TRD)
- depressive symptoms in adults with major depressive disorder (MDD) with suicidal thoughts or actions

SPRAVATO is not for use as a medicine to prevent or relieve pain (anesthetic). It is not known if SPRAVATO is safe and effective as an anesthetic medicine.

It is not known if SPRAVATO is safe and effective for use in preventing suicide or in reducing suicidal thoughts or actions. SPRAVATO is not for use in place of hospitalization if your healthcare provider determines that hospitalization is needed, even if improvement is experienced after the first dose of SPRAVATO.

It is not known if SPRAVATO is safe and effective in children.

Do not take SPRAVATO if you:

- have blood vessel (aneurysmal vascular) disease (including in the brain, chest, abdominal aorta, arms and legs)
- have an abnormal connection between your veins and arteries (arteriovenous malformation)
- have a history of bleeding in the brain
- are allergic to esketamine, ketamine, or any of the other ingredients in SPRAVATO. See the end of this Medication Guide for a complete list of ingredients in SPRAVATO.

If you are not sure if you have any of the above conditions, talk to your healthcare provider before taking SPRAVATO.

Before you take SPRAVATO, tell your healthcare provider about all of your medical conditions, including if you:

- have heart or brain problems, including:
 - high blood pressure (hypertension)
 - slow or fast heartbeats that cause shortness of breath, chest pain, lightheadedness, or fainting
 - history of heart attack
 - history of stroke
 - heart valve disease or heart failure
 - history of brain injury or any condition where there is increased pressure in the brain
- have liver problems
- have ever had a condition called “psychosis” (see, feel, or hear things that are not there, or believe in things that are not true).
- are pregnant or plan to become pregnant. SPRAVATO may harm your baby. You should not take SPRAVATO if you are pregnant.
 - Tell your healthcare provider right away if you become pregnant during treatment with SPRAVATO.
 - If you are able to become pregnant, talk to your healthcare provider about methods to prevent pregnancy during treatment with SPRAVATO.
 - There is a pregnancy registry for women who are exposed to SPRAVATO during pregnancy. The purpose of the registry is to collect information about the health of women exposed to SPRAVATO and their baby. If you become pregnant during treatment with SPRAVATO, talk to your healthcare provider about registering with the National Pregnancy Registry for Antidepressants at 1-844-405-6185 or online at <https://womensmentalhealth.org/clinical-and-research-programs/pregnancyregistry/antidepressants/>.
- are breastfeeding or plan to breastfeed. You should not breastfeed during treatment with SPRAVATO.

Tell your healthcare provider about all the medicines that you take, including prescription and over-the-counter medicines, vitamins and herbal supplements. Taking SPRAVATO with certain medicines may cause side effects.

Especially tell your healthcare provider if you take central nervous system (CNS) depressants, psychostimulants, or monoamine oxidase inhibitors (MAOIs) medicines. Ask your healthcare provider if you are not sure if you take these medicines. Your healthcare provider can tell you if it is safe to take SPRAVATO with your other medicines.

Know the medicines you take. Keep a list of them to show to your healthcare provider and pharmacist when you get a new medicine.

How will I take SPRAVATO?

- You will take SPRAVATO nasal spray yourself, under the supervision of a healthcare provider in a healthcare setting. Your healthcare provider will show you how to use the SPRAVATO nasal spray device.
- Your healthcare provider will tell you how much SPRAVATO you will take and when you will take it.
- Follow your SPRAVATO treatment schedule exactly as your healthcare provider tells you to.
- During and after each use of the SPRAVATO nasal spray device, you will be checked by a healthcare provider who will decide when you are ready to leave the healthcare setting.
- You will need to plan for a caregiver or family member to drive you home after taking SPRAVATO.
- If you miss a SPRAVATO treatment, your healthcare provider may change your dose and treatment schedule.
- Some people taking SPRAVATO get nausea and vomiting. You should not eat for at least 2 hours before taking SPRAVATO and not drink liquids at least 30 minutes before taking SPRAVATO.
- If you take a nasal corticosteroid or nasal decongestant medicine, take these medicines at least 1 hour before taking SPRAVATO.

What should I avoid while taking SPRAVATO?

- **Do not** drive, operate machinery, or do anything where you need to be completely alert after taking SPRAVATO. **Do not** take part in these activities until the next day following a restful sleep. See **“What is the most important information I should know about SPRAVATO?”**

What are the possible side effects of SPRAVATO?

SPRAVATO may cause serious side effects, including:

- See “**What is the most important information I should know about SPRAVATO?**”
- **Increased blood pressure.** SPRAVATO can cause a temporary increase in your blood pressure that may last for about 4 hours after taking a dose. Your healthcare provider will check your blood pressure before taking SPRAVATO and for at least 2 hours after you take SPRAVATO. Tell your healthcare provider right away if you get chest pain, shortness of breath, sudden severe headache, change in vision, or seizures after taking SPRAVATO.
- **Problems with thinking clearly.** Tell your healthcare provider if you have problems thinking or remembering.
- **Bladder problems.** Tell your healthcare provider if you develop trouble urinating, such as a frequent or urgent need to urinate, pain when urinating, or urinating frequently at night.

The most common side effects of SPRAVATO when used along with an antidepressant taken by mouth include:

- feeling disconnected from yourself, your thoughts, feelings and things around you
- dizziness
- nausea
- feeling sleepy
- spinning sensation
- decreased feeling of sensitivity (numbness)
- feeling anxious
- lack of energy
- increased blood pressure
- vomiting
- feeling drunk
- feeling very happy or excited

If these common side effects occur, they usually happen right after taking SPRAVATO and go away the same day.

These are not all the possible side effects of SPRAVATO.

Call your doctor for medical advice about side effects. You may report side effects to FDA at 1-800-FDA-1088.

General information about SPRAVATO.

Medicines are sometimes prescribed for purposes other than those listed in a Medication Guide. You can ask your pharmacist or healthcare provider for information about SPRAVATO that is written for healthcare providers.

What are the ingredients in SPRAVATO?

Active ingredient: esketamine hydrochloride

Inactive ingredients: citric acid monohydrate, edetate disodium, sodium hydroxide, and water for injection

Manufactured for: Janssen Pharmaceuticals, Inc., Titusville, NJ 08560
© 2019 Janssen Pharmaceutical Companies
For more information, go to www.SPRAVATO.com or call 1-800-526-7736.

This Medication Guide has been approved by the U.S. Food and Drug Administration.

Revised: 07/2020

cp-79818v7